

# **Kurunjang Secondary College (8718)**

---

## **2008 School Level Report**

---

---

Please check the data in this report. If, after comparing it with your own records, you deem it to be incorrect or incomplete, follow the directions on the following website:

- <http://www.education.vic.gov.au/management/schoolimprovement/performancecd/>  
then select 'School Performance Reports'.
- 
-

# Contents

---

	<b>Page No.</b>
Privacy	3
SFO Density and LBOTE	4
Teacher Judgments against the VELs	5-13
NAPLAN - Reading	14
- Writing	15
- Numeracy	16
AIM - Reading	17
- Mathematics	18
VCE	19-23
VET	24
VCAL	25
Teacher Assessment of Student Progress (PSD students)	26-27
Enrolment	28
Student Retention - Apparent	29
- Real	30
Exit Destination	31-34
Student Absence	35
Opinion Surveys - Parent	36
- Staff	37
Performance & Development Culture	38
Staff Sick Leave	39
Teaching Staff Retention	40
Bank Balances	41

## Privacy

---

When reporting on the school's performance to the school community, care must be taken to avoid the disclosure of information that can directly or indirectly identify an individual. This may be a particular issue when reporting on the achievement of specific cohorts of students or the opinions of staff where there are small numbers.

In situations where privacy cannot be assured, schools may wish to report on the mean result or provide a written comment on school, year level or cohort performance.

Where the School Level Report is provided to school council members as part of any annual reporting process, or used for discussion on a school's performance, such as in consultation with the school community in the school self-evaluation process, it is important to remind school community members of their duty to only use this information for the purpose it was provided, and that the material must be kept confidential.

It is important to note that information that identifies an individual or can be used with other readily available information to identify a person is now protected by the *Information Privacy Act 2000* (<http://www.education.vic.gov.au/about/deptpolicies/informationprivacy.htm>).

---

# SFO Density and LBOTE

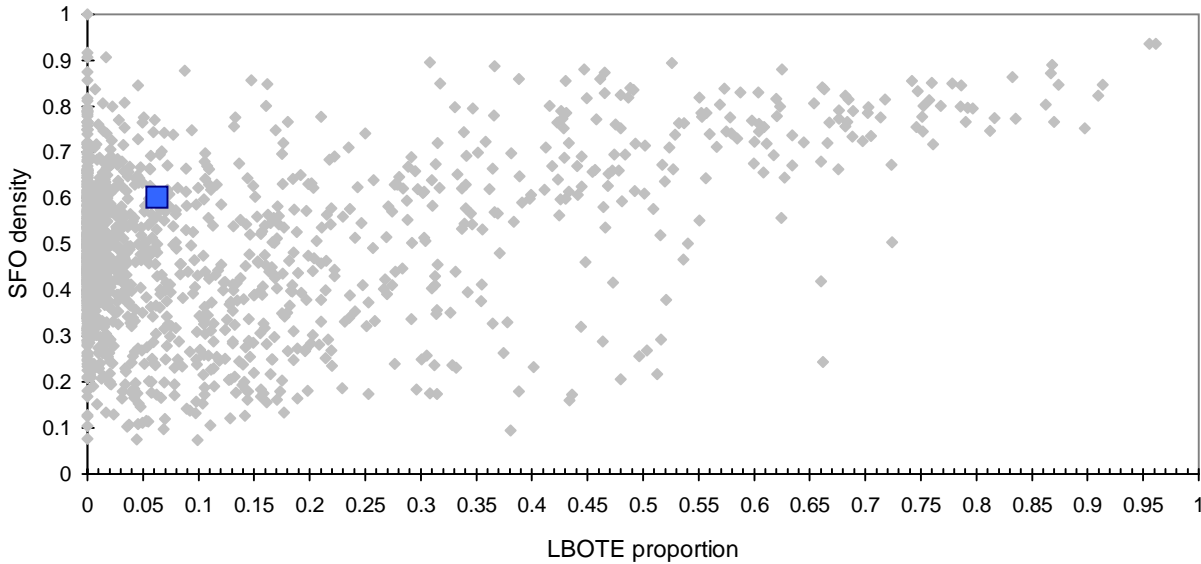
School no: 8718

School name: Kurunjang Secondary College

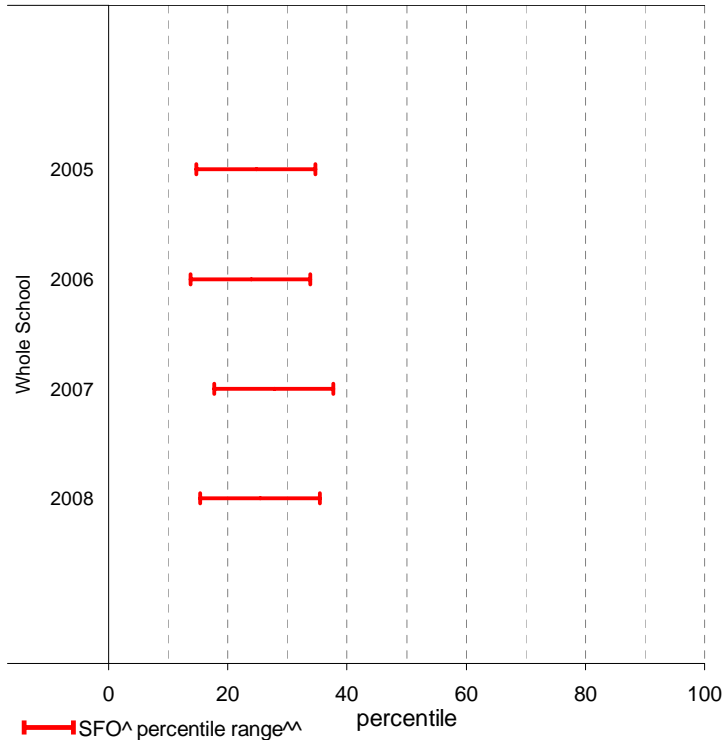
Explanation: The chart below plots the school's 2008 SFO (Student Family Occupation) density<sup>^</sup> and LBOTE (Language Background Other Than English) proportion\* against that of all government schools. This school is highlighted as a square on the chart.

	2001	2002	2003	2004	2005	2006	2007	2008
SFO density <sup>^</sup> :					0.58	0.59	0.58	0.60
LBOTE proportion*:	0.04	0.04	0.03	0.03	0.02	0.03	0.04	0.06

School's 2008 SFO density and LBOTE proportion against that of all government schools



School's SFO<sup>^</sup> percentile range<sup>^^</sup> over time



Notes: <sup>^</sup> The higher the SFO density, the lower the SFO percentile and the lower the socio-economic status (SES).  
<sup>^^</sup> The school's SFO percentile range shows the 20% of schools with an SFO Density most like this school.  
\* From 2007, a student is LBOTE if either the student or one parent/guardian speaks a language other than English at home. Prior to 2007, a student is LBOTE if the student or one of the parents was born in a non-English speaking country.

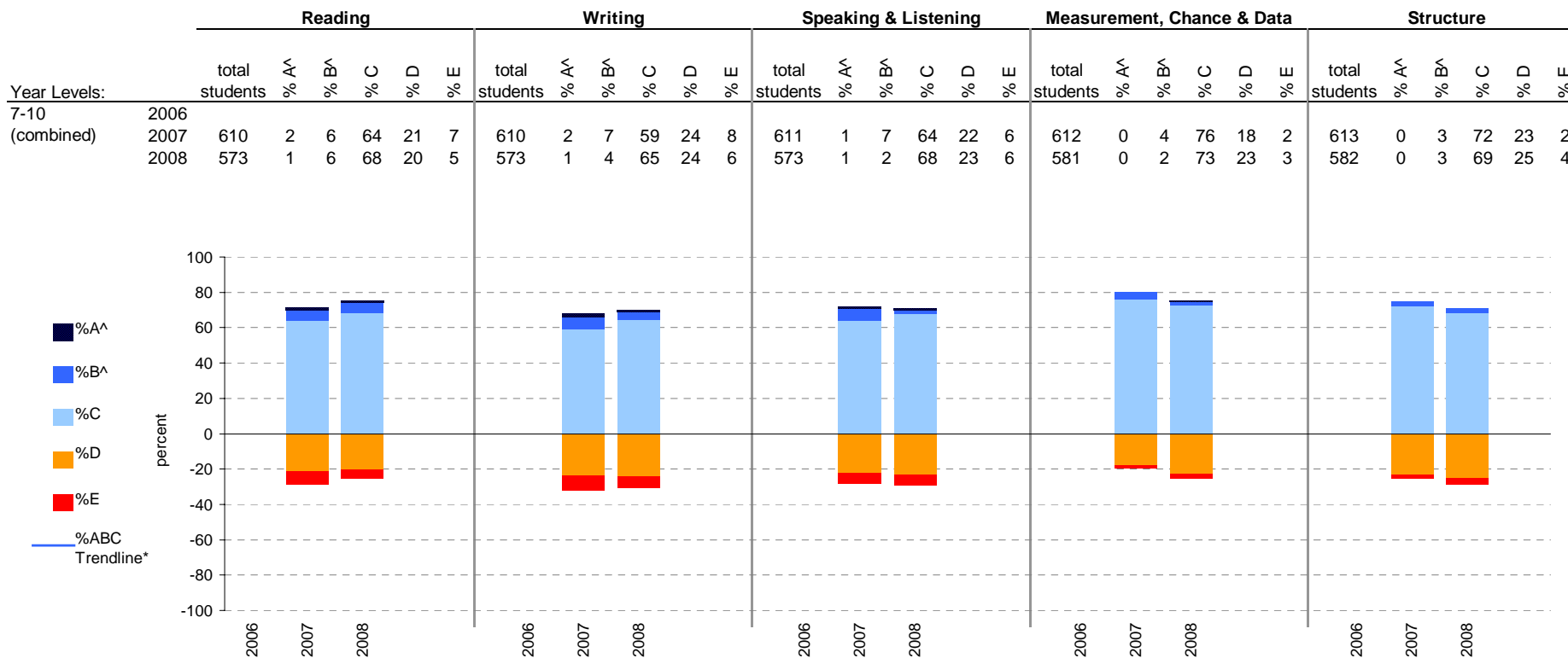
# Teacher Judgments against the VELS - Year levels 7-10 combined

School no: 8718

School name: Kurunjang Secondary College

Source of data: Data retrieved electronically from CASES21.

Explanation: Teacher judgments of student achievement against the VELS.



Notes: \* The school trendline is being trialled. It is only plotted when there is data for each calendar year.  
 ^ The cutoff between grades A and B changed in 2007. Further information is available on the following website:  
<http://www.education.vic.gov.au/studentlearning/studentreports/schools/whatsnew.htm>.

# Teacher Judgments against the VELS - English (secondary)

School no: 8718

School name: Kurunjang Secondary College

Source of data: Data retrieved electronically from CASES21.

Explanation: Teacher judgments of student achievement against the VELS.

Notes: \* The school trendline is only plotted when there is data for each calendar year.

\*\* In 2006, approx. 850 schools assessed their students against the 0.25 VELS scale. 2006 benchmarks are therefore based on a subset of schools.

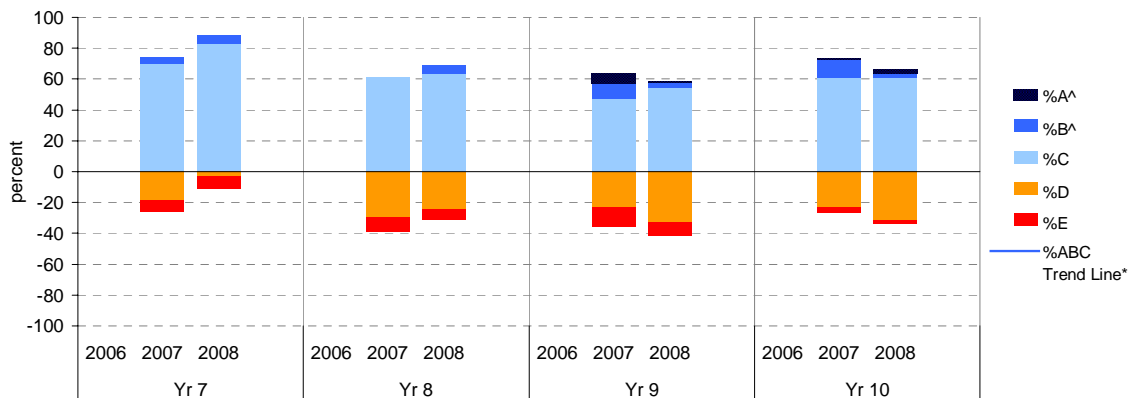
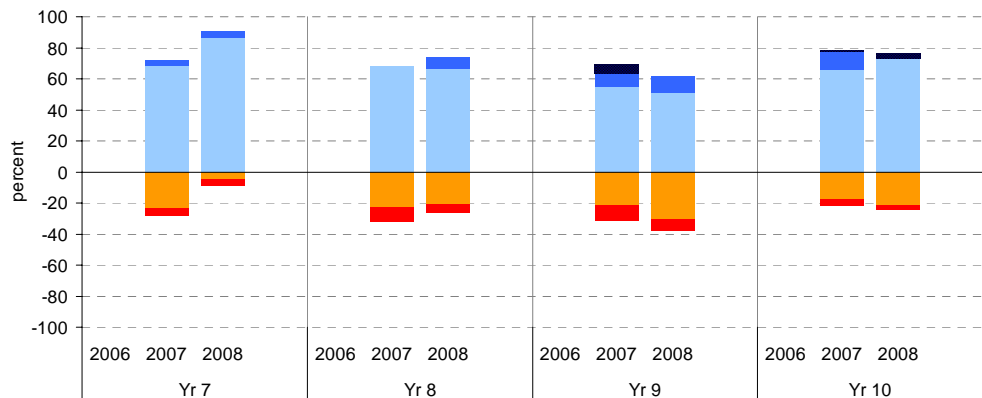
^ The cutoff between grades A and B changed in 2007. Further information is available on the following website: <http://www.education.vic.gov.au/studentlearning/studentreports/schools/whatsnew.htm>.

## Reading

	total students	% of students by grade					Mean Score	
		A^	B^	C	D	E	School	State**
Yr 7	2006						4.23	4.32
	2007	141	0	4	68	23	5	4.39
	2008	123	0	4	87	5	4	4.41
Yr 8	2006						4.67	4.78
	2007	156	0	0	68	23	9	4.85
	2008	148	0	7	66	21	5	4.76
Yr 9	2006						5.25	5.26
	2007	171	5	9	55	21	10	5.36
	2008	152	0	11	51	31	7	5.18
Yr 10	2006						5.77	5.77
	2007	142	1	11	66	18	4	5.79
	2008	150	3	1	73	21	3	5.77

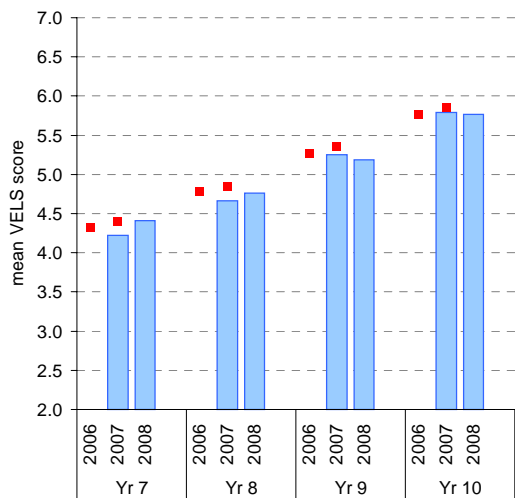
## Writing

	total students	% of students by grade					Mean Score	
		A^	B^	C	D	E	School	State**
Yr 7	2006						4.21	4.28
	2007	141	0	4	70	18	7	4.36
	2008	123	0	6	83	3	8	4.37
Yr 8	2006						4.63	4.75
	2007	156	0	0	62	29	9	4.83
	2008	148	0	5	64	24	7	4.70
Yr 9	2006						5.20	5.25
	2007	171	6	10	47	23	13	5.34
	2008	152	1	3	55	33	9	5.14
Yr 10	2006						5.77	5.75
	2007	142	1	12	61	23	4	5.83
	2008	150	3	3	61	31	3	5.73

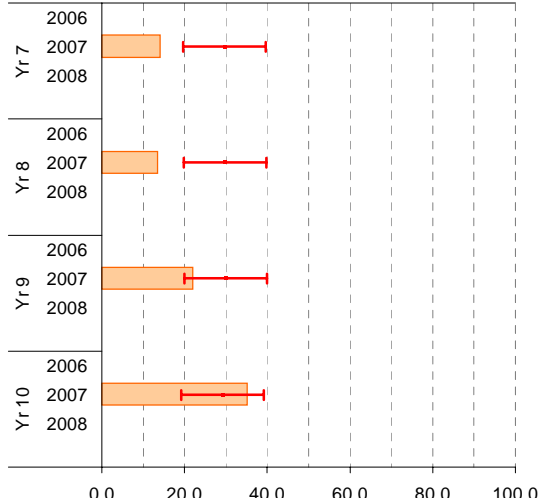


## Reading

School Mean against State Mean



School Mean as percentile against SFO percentile range

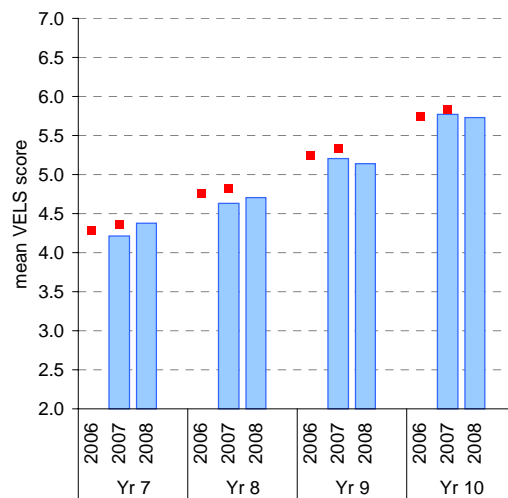


■ School Mean ■ State Mean\*\*  
— School Trendline\*

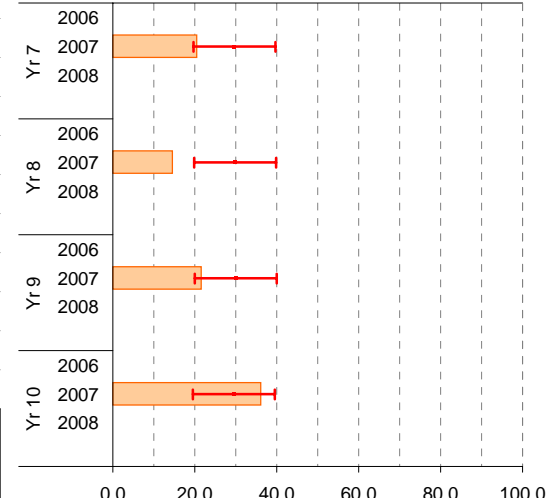
■ School Mean as percentile ■ SFO Percentile range

## Writing

School Mean against State Mean



School Mean as percentile against SFO percentile range



■ School Mean ■ State Mean\*\*  
— School Trendline\*

■ School Mean as percentile ■ SFO Percentile range

# Teacher Judgments against the VELS - English (secondary)

School no: 8718

School name: Kurunjang Secondary College

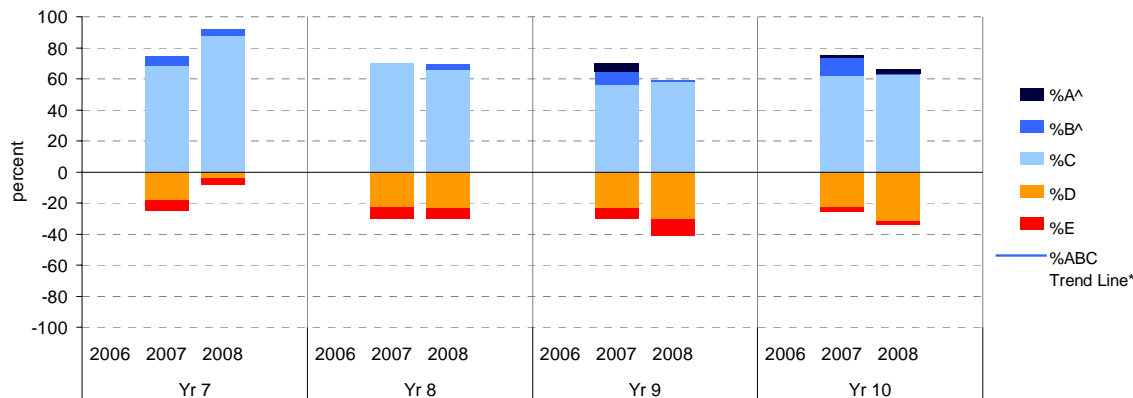
Source of data: Data retrieved electronically from CASES21.

Explanation: Teacher judgments of student achievement against the VELS.

Notes: \* The school trendline is only plotted when there is data for each calendar year.  
 \*\* In 2006, approx. 850 schools assessed their students against the 0.25 VELS scale. 2006 benchmarks are therefore based on a subset of schools.  
 ^ The cutoff between grades A and B changed in 2007. Further information is available on the following website:  
<http://www.education.vic.gov.au/studentlearning/studentreports/schools/whatsnew.htm>.

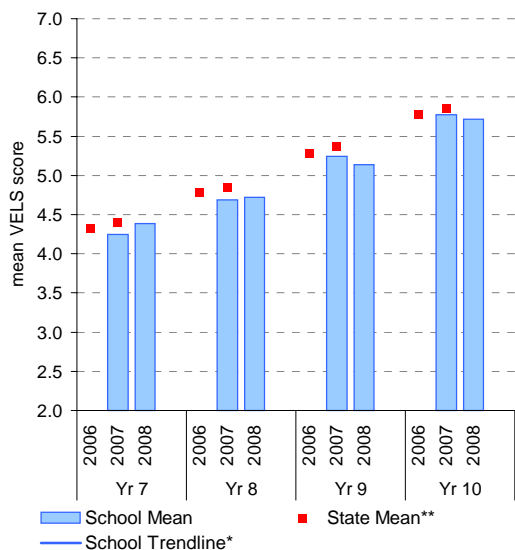
## Speaking and Listening

	total students	% of students by grade					Mean Score		total students	% of students by grade	Mean Score						
		A^	B^	C	D	E	School	State**			A^	B^	C	D	E	School	State**
Yr 7	2006						4.25	4.33	2006						5.28		
	2007	141	0	6	68	18	7	4.39	2007	172	5	9	56	24	6	5.36	
	2008	123	0	4	88	4	4	4.39	2008	152	0	1	58	30	11	5.13	
Yr 8	2006						4.79	4.79	2006						5.78		
	2007	156	0	0	70	23	7	4.69	4.85	2007	142	1	12	62	23	3	5.77
	2008	148	0	3	66	24	7	4.72	2008	150	3	1	63	32	2	5.72	

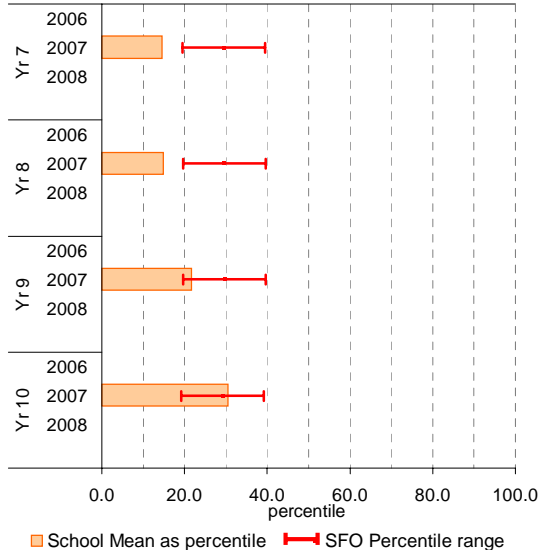


## Speaking and Listening

School Mean against State Mean



School Mean as percentile against SFO percentile range



# Teacher Judgments against the VELS - Mathematics (secondary)

School no: 8718

School name: Kurunjang Secondary College

Source of data: Data retrieved electronically from CASES21.

Explanation: Teacher judgments of student achievement against the VELS.

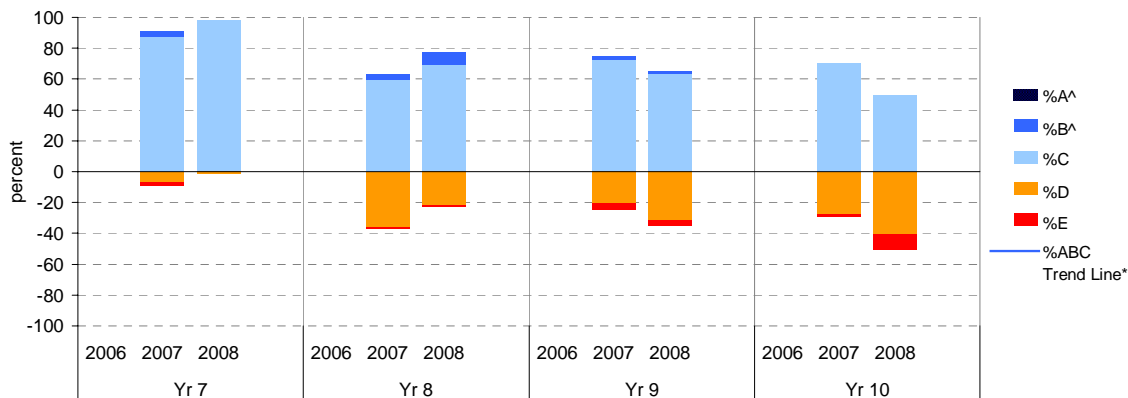
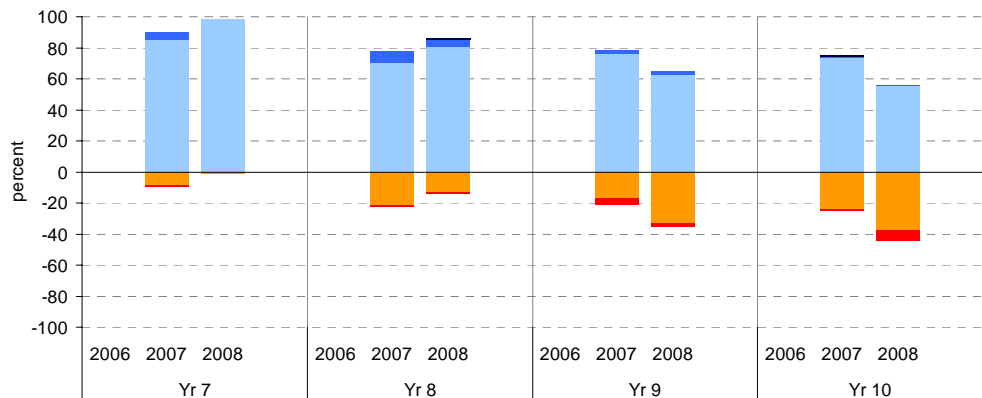
Notes: \* The school trendline is only plotted when there is data for each calendar year.  
 \*\* In 2006, approx. 850 schools assessed their students against the 0.25 VELS scale. 2006 benchmarks are therefore based on a subset of schools.  
 ^ The cutoff between grades A and B changed in 2007. Further information is available on the following website:  
<http://www.education.vic.gov.au/studentlearning/studentreports/schools/whatsnew.htm>.

## Measurement, Chance and Data

	total		% of students by grade					Mean Score	
	students		A^	B^	C	D	E	School	State**
Yr 7	2006							4.38	4.31
	2007	142	0	5	85	8	1	4.38	4.40
	2008	122	0	0	98	2	0	4.43	
Yr 8	2006							4.78	
	2007	156	0	7	71	22	1	4.77	4.83
	2008	149	1	5	81	13	1	4.88	
Yr 9	2006							5.30	5.24
	2007	174	0	2	76	17	4	5.30	5.34
	2008	158	0	2	63	33	3	5.21	
Yr 10	2006							5.66	
	2007	140	1	1	74	24	1	5.77	5.76
	2008	152	0	1	55	38	7	5.65	

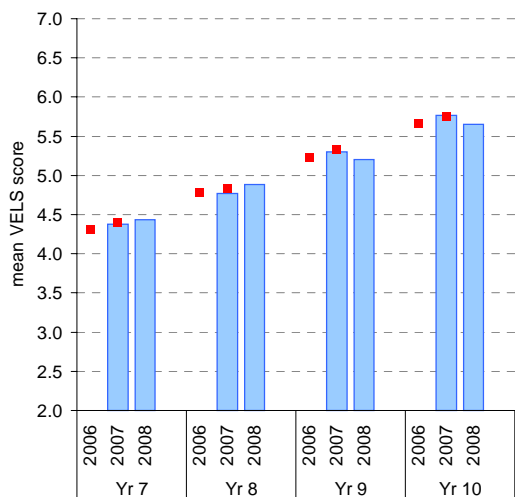
## Structure

	total		% of students by grade					Mean Score	
	students		A^	B^	C	D	E	School	State**
Yr 7	2006							4.30	4.30
	2007	142	0	4	87	7	2	4.38	4.39
	2008	123	0	0	98	2	0	4.44	
Yr 8	2006							4.74	
	2007	157	0	4	59	36	1	4.72	4.82
	2008	149	0	8	69	21	1	4.83	
Yr 9	2006							5.21	5.21
	2007	174	0	3	72	21	4	5.24	5.29
	2008	158	0	2	63	32	3	5.19	
Yr 10	2006							5.60	
	2007	140	0	0	71	28	1	5.70	5.72
	2008	152	0	0	49	41	10	5.57	

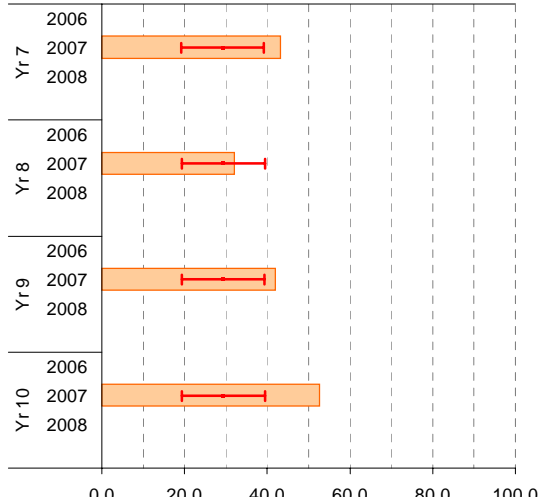


## Measurement, Chance and Data

### School Mean against State Mean



### School Mean as percentile against SFO percentile range

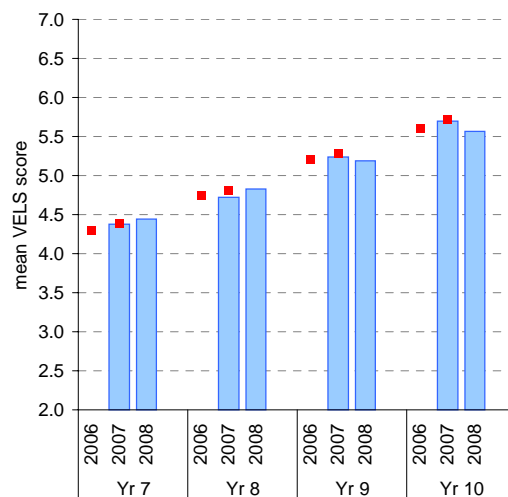


■ School Mean  
 ■ State Mean\*\*  
 — School Trendline\*

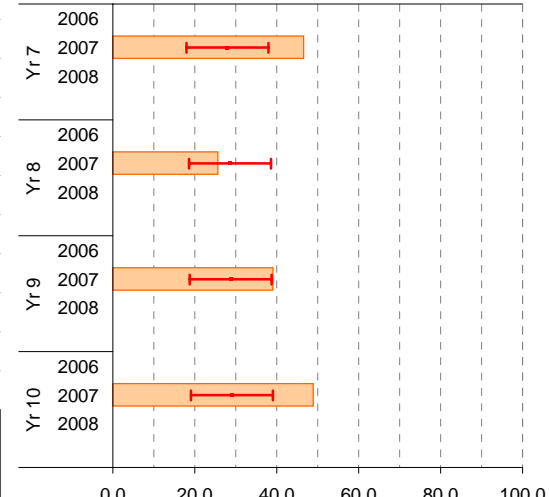
■ School Mean as percentile  
 — SFO Percentile range

## Structure

### School Mean against State Mean



### School Mean as percentile against SFO percentile range



■ School Mean  
 ■ State Mean\*\*  
 — School Trendline\*

■ School Mean as percentile  
 — SFO Percentile range

# Teacher Judgments against the VELS - English (secondary)

**School no:** 8718  
**School name:** Kurunjang Secondary College  
**Source of data:** Data retrieved electronically from CASES21.  
**Explanation:** Teacher judgments of student achievement against the VELS.

## Reading

Year Level	Year	Total <sup>1</sup>	Assessed <sup>2</sup>	Level 1				Level 2				Level 3				Level 4				Level 5				Level 6				Level 6E			School mean	State mean*	Difference between school and state mean*					
				0.00	0.50	1.00	1.25	1.50	1.75	2.00	2.25	2.50	2.75	3.00	3.25	3.50	3.75	4.00	4.25	4.50	4.75	5.00	5.25	5.50	5.75	6.00	6.25	6.50	6.75									
yr7	2008	123	123							1					2	2		6	11	96	5												4.41					
yr7	2007	142	141							1			1	1	1	1	2	1	12	21	36	60	5									4.23	4.39	-0.17				
yr8	2008	150	148											1	1			1	2	3	10	21	36	62		11						4.76						
yr7	2006																																4.32					
yr8	2007	160	156							1					2		1	3	3	4	10	26	42	64								4.67	4.85	-0.18				
yr9	2008	157	152														1	1		4	5	13	34		47	31	16					5.18						
yr7	2005																																					
yr8	2006																																	4.78				
yr9	2007	174	171													1	2	1	1		12	12	24		34	60	15	9				5.25	5.36	-0.11				
yr10	2008	153	150																		2	2			8	24	59	50	1	3	1		5.77					
yr8	2005																																					
yr9	2006																																		5.26			
yr10	2007	147	142														1				2	3			4	21	52	42	16	1			5.79	5.85	-0.06			
yr9	2005																																					
yr10	2006																																			5.77		
yr10	2005																																					

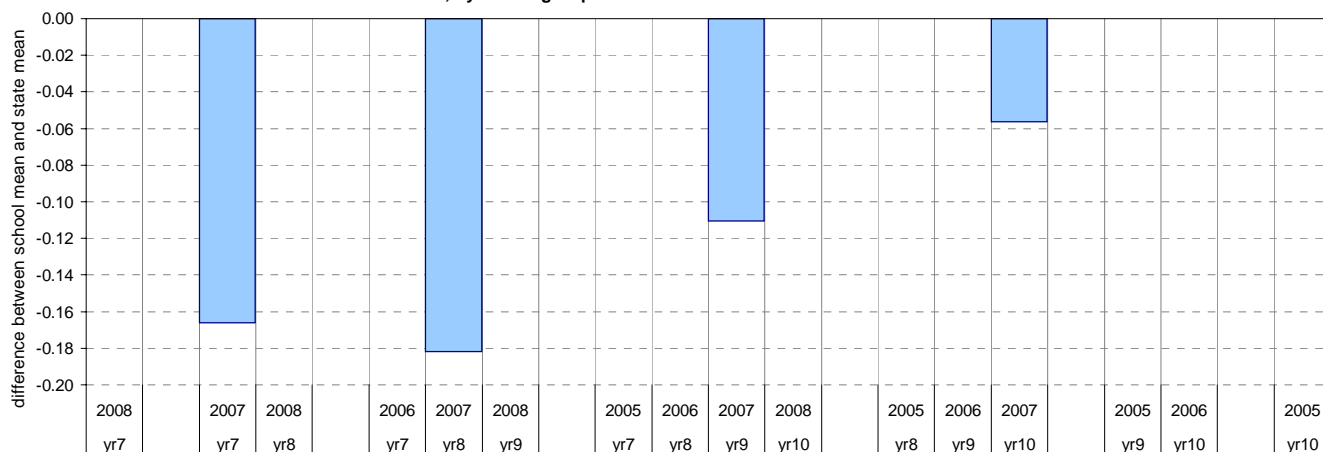
shading indicates a 'C' grade (at the expected standard) on the VELS scale.

<sup>1</sup> The total number of students eligible to be assessed. This figure will typically match, or be very close to, the Year Level enrolment.

<sup>2</sup> The number of students assessed against the VELS. The difference between this figure and the total (1) should be accounted for by students assessed against Individual Learning Plans and/or the ESL companion in the case of English.

\* Note: In 2006, approx. 850 schools assessed their students against the 0.25 VELS scale. 2006 benchmarks are therefore based on a subset of schools.

Difference between school mean and state mean\*, by cohort group



# Teacher Judgments against the VELS - English (secondary)

**School no:** 8718  
**School name:** Kurunjang Secondary College  
**Source of data:** Data retrieved electronically from CASES21.  
**Explanation:** Teacher judgments of student achievement against the VELS.

## Writing

Year Level	Year	Total <sup>1</sup>	Assessed <sup>2</sup>	Level 1			Level 2			Level 3			Level 4			Level 5			Level 6			Level 6E			School mean	State mean*	Difference between school and state mean*				
				0.00	0.50	1.00	1.25	1.50	1.75	2.00	2.25	2.50	2.75	3.00	3.25	3.50	3.75	4.00	4.25	4.50	4.75	5.00	5.25	5.50				5.75	6.00	6.25	6.50
yr7	2008	123	123							1			2	1	6	4	10	92	7								4.37				
yr7	2007	142	141							1	1	1	1		6	10	16	48	51	6							4.21	4.36	-0.14		
yr8	2008	150	148											1	3	2	4	12	24	48	46	8					4.70				
yr7	2006																											4.28			
yr8	2007	160	156							1			2	1	3	1	6	12	34	45	51						4.63	4.83	-0.19		
yr9	2008	157	152												1			5	7	15	35	48	35	5	1		5.14				
yr7	2005																														
yr8	2006																											4.75			
yr9	2007	174	171											1	3	4		3	11	7	33	35	46	17	11		5.20	5.34	-0.13		
yr10	2008	153	150																1	3		11	36	52	39	4	3	1	5.73		
yr8	2005																														
yr9	2006																											5.25			
yr10	2007	147	142												2				1	2		5	28	49	37	17	1		5.77	5.83	-0.06
yr9	2005																														
yr10	2006																											5.75			
yr10	2005																														

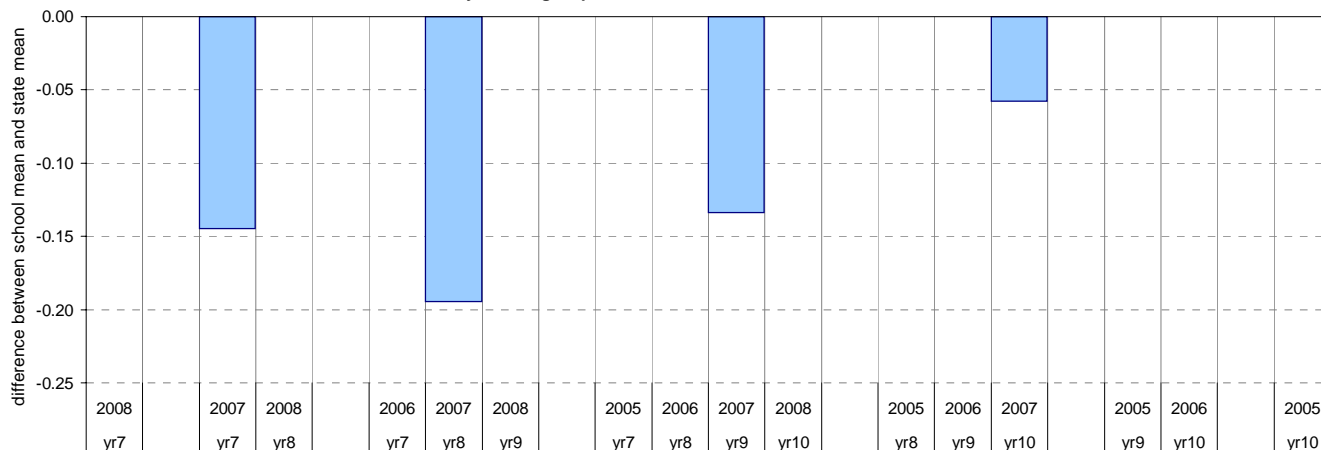
shading indicates a 'C' grade (at the expected standard) on the VELS scale.

<sup>1</sup> The total number of students eligible to be assessed. This figure will typically match, or be very close to, the Year Level enrolment.

<sup>2</sup> The number of students assessed against the VELS. The difference between this figure and the total (1) should be accounted for by students assessed against Individual Learning Plans and/or the ESL companion in the case of English.

\* Note: In 2006, approx. 850 schools assessed their students against the 0.25 VELS scale. 2006 benchmarks are therefore based on a subset of schools.

Difference between school mean and state mean\*, by cohort group



# Teacher Judgments against the VELS - English (secondary)

**School no:** 8718  
**School name:** Kurunjang Secondary College  
**Source of data:** Data retrieved electronically from CASES21.  
**Explanation:** Teacher judgments of student achievement against the VELS.

## Speaking and Listening

Year Level	Year	Total <sup>1</sup>	Assessed <sup>2</sup>	Level 1			Level 2			Level 3			Level 4			Level 5			Level 6			Level 6E			School mean	State mean*	Difference between school and state mean*	
				0.00	0.50	1.00	1.25	1.50	1.75	2.00	2.25	2.50	2.75	3.00	3.25	3.50	3.75	4.00	4.25	4.50	4.75	5.00	5.25	5.50				5.75
yr7	2008	123	123				2			1		2		5	12	96	5									4.39		
yr7	2007	142	141				1				3	1	5	9	17	38	58	9								4.25	4.39	-0.15
yr8	2008	150	148								1		2	2	5	7	28	45	53	5						4.72		
yr7	2006																										4.33	
yr8	2007	160	156								2	2	2	1	4	11	25	48	61							4.69	4.85	-0.16
yr9	2008	157	152												1	6	9	12	34	49	39	2				5.13		
yr7	2005																											
yr8	2006																										4.79	
yr9	2007	174	172									1		2	1	7	23	18	48	49	15	8				5.24	5.36	-0.12
yr10	2008	153	150														2	1	21	27	47	47	1	4		5.72		
yr8	2005																											
yr9	2006																										5.28	
yr10	2007	147	142										1	1				2	8	24	51	37	17	1		5.77	5.85	-0.07
yr9	2005																											
yr10	2006																										5.78	
yr10	2005																											

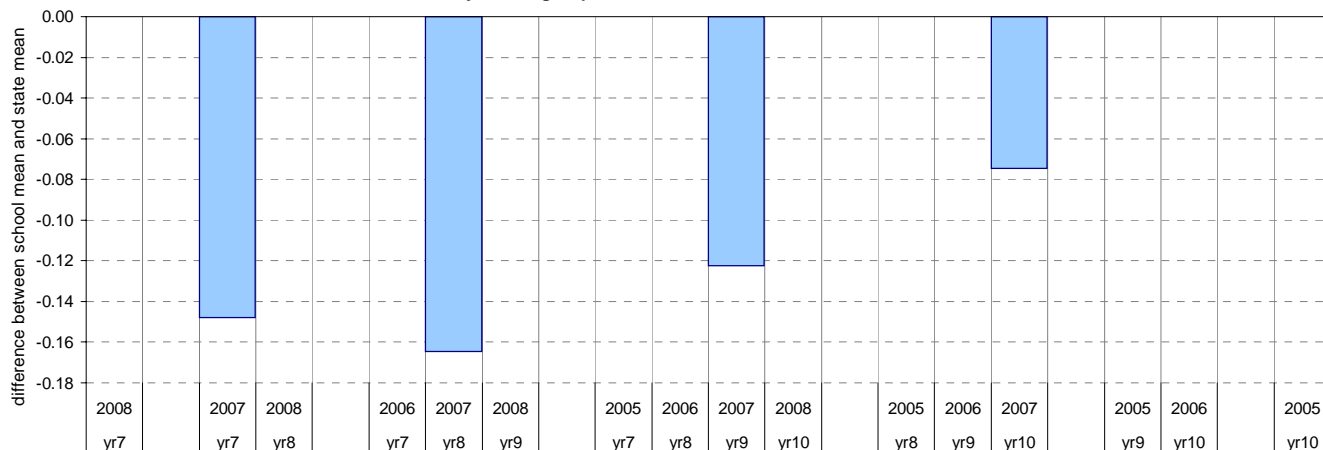
shading indicates a 'C' grade (at the expected standard) on the VELS scale.

<sup>1</sup> The total number of students eligible to be assessed. This figure will typically match, or be very close to, the Year Level enrolment.

<sup>2</sup> The number of students assessed against the VELS. The difference between this figure and the total (1) should be accounted for by students assessed against Individual Learning Plans and/or the ESL companion in the case of English.

\* Note: In 2006, approx. 850 schools assessed their students against the 0.25 VELS scale. 2006 benchmarks are therefore based on a subset of schools.

Difference between school mean and state mean\*, by cohort group



# Teacher Judgments against the VELS - Mathematics (secondary)

**School no:** 8718  
**School name:** Kurunjang Secondary College  
**Source of data:** Data retrieved electronically from CASES21.  
**Explanation:** Teacher judgments of student achievement against the VELS.

## Measurement, Chance and Data

Year Level	Year	Total <sup>1</sup>	Assessed <sup>2</sup>	Level 1				Level 2				Level 3				Level 4				Level 5				Level 6				Level 6E			School mean	State mean*	Difference between school and state mean*					
				0.00	0.50	1.00	1.25	1.50	1.75	2.00	2.25	2.50	2.75	3.00	3.25	3.50	3.75	4.00	3.25	3.50	3.75	4.00	4.25	4.50	4.75	5.00	5.25	5.50	5.75	6.00				6.25	6.50	6.75		
yr7	2008	124	122												1	1				27	93												4.43					
yr7	2007	143	142										2						3	9	34	87	7									4.38	4.40	-0.02				
yr8	2008	151	149													1				2	18	33	87	7	1							4.88						
yr7	2006																																4.31					
yr8	2007	161	156											1						13	21	65	45	11							4.77	4.83	-0.06					
yr9	2008	160	158																	4	17	35	52	47	3						5.21							
yr7	2005																																	4.78				
yr8	2006																																	4.78				
yr9	2007	175	174												1					2	4	4	26	49	84	4					5.30	5.34	-0.04					
yr10	2008	153	152																	2	3	5	12	45	42	42	1					5.65						
yr8	2005																																		5.24			
yr9	2006																																	5.24				
yr10	2007	145	140																		2	3	30	57	46	1	1					5.77	5.76	0.01				
yr9	2005																																		5.66			
yr10	2006																																			5.66		

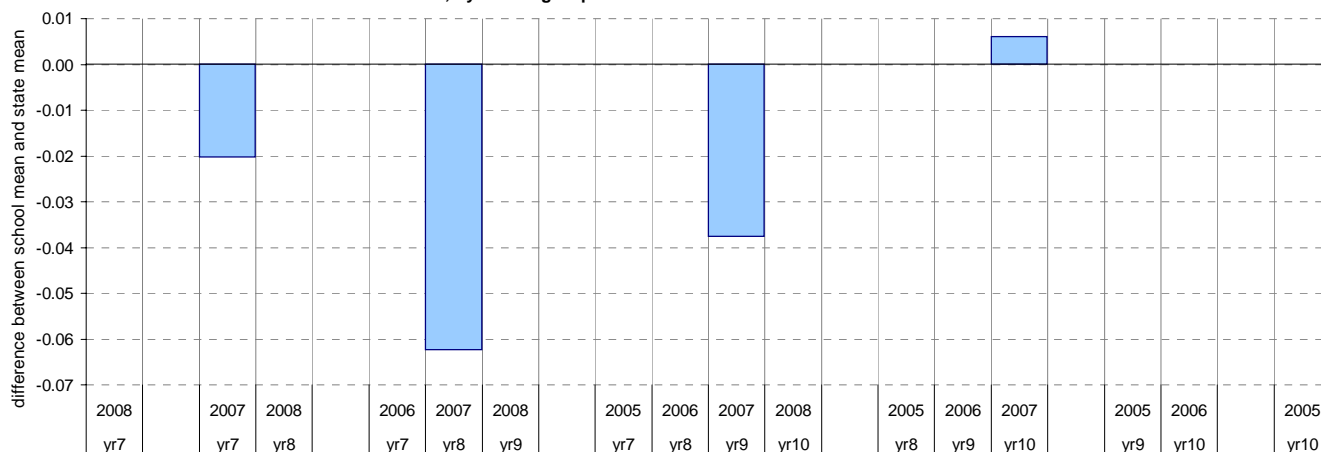
shading indicates a 'C' grade (at the expected standard) on the VELS scale.

<sup>1</sup> The total number of students eligible to be assessed. This figure will typically match, or be very close to, the Year Level enrolment.

<sup>2</sup> The number of students assessed against the VELS. The difference between this figure and the total (1) should be accounted for by students assessed against Individual Learning Plans and/or the ESL companion in the case of English.

\* Note: In 2006, approx. 850 schools assessed their students against the 0.25 VELS scale. 2006 benchmarks are therefore based on a subset of schools.

Difference between school mean and state mean\*, by cohort group



# Teacher Judgments against the VELS - Mathematics (secondary)

**School no:** 8718  
**School name:** Kurunjang Secondary College  
**Source of data:** Data retrieved electronically from CASES21.  
**Explanation:** Teacher judgments of student achievement against the VELS.

## Structure

Year Level	Year	Total <sup>1</sup>	Assessed <sup>2</sup>	Level 1				Level 2				Level 3				Level 4				Level 5				Level 6				Level 6E			School mean	State mean*	Difference between school and state mean*								
				0.00	0.50	1.00	1.25	1.50	1.75	2.00	2.25	2.50	2.75	3.00	3.25	3.50	3.75	4.00	4.25	4.50	4.75	5.00	5.25	5.50	5.75	6.00	6.25	6.50	6.75												
yr7	2008	125	123											2																				4.44							
yr7	2007	143	142										1	2																				4.38	4.39	-0.01					
yr8	2008	151	149											2																				4.83							
yr7	2006																																		4.30						
yr8	2007	161	157												1																				4.72	4.82	-0.10				
yr9	2008	160	158																																5.19						
yr7	2005																																								
yr8	2006																																				4.74				
yr9	2007	175	174										1																							5.24	5.29	-0.05			
yr10	2008	153	152																																	5.57					
yr8	2005																																								
yr9	2006																																					5.21			
yr10	2007	145	140																																		5.70	5.72	-0.02		
yr9	2005																																								
yr10	2006																																						5.60		
yr10	2005																																								

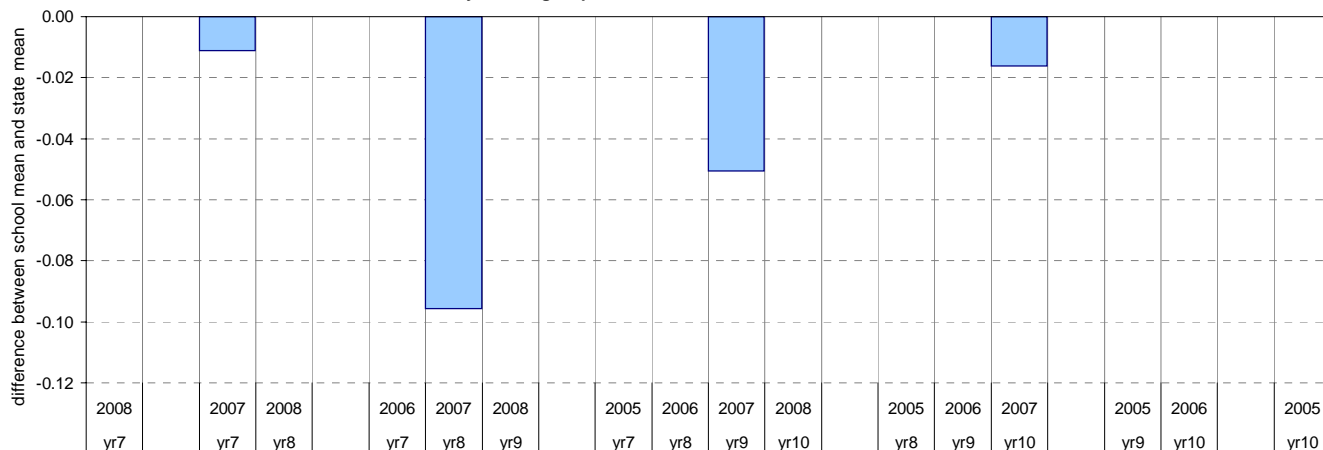
shading indicates a 'C' grade (at the expected standard) on the VELS scale.

<sup>1</sup> The total number of students eligible to be assessed. This figure will typically match, or be very close to, the Year Level enrolment.

<sup>2</sup> The number of students assessed against the VELS. The difference between this figure and the total (1) should be accounted for by students assessed against Individual Learning Plans and/or the ESL companion in the case of English.

\* Note: In 2006, approx. 850 schools assessed their students against the 0.25 VELS scale. 2006 benchmarks are therefore based on a subset of schools.

Difference between school mean and state mean\*, by cohort group



# NAPLAN Year 7 and 9: Reading

School no: 8718

School name: Kurunjang Secondary College

Source of data: Victorian Curriculum and Assessment Authority.

Explanation: The National Assessment Program - Literacy and Numeracy (NAPLAN) is conducted each year for students in Years 3, 5, 7 and 9. For more detailed NAPLAN data, refer to the NAPLAN Data Service website at <http://naplands.vcaa.vic.edu.au>. A reference guide for analysing NAPLAN data is available at <http://www.vcaa.vic.edu.au/vcaa/prep10/naplan/schools/analysingnaplandata.pdf>.

Notes: \* % student participation = (students who participated in NAPLAN / February enrolments) \* 100

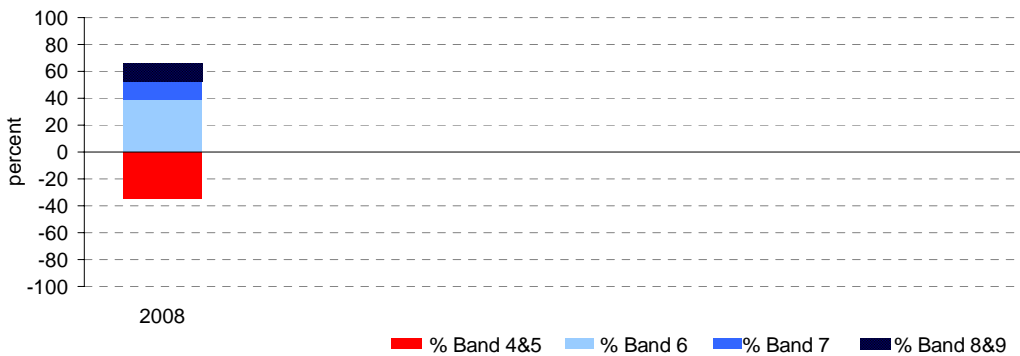
## Year 7

	student participation		Percent of students by NAP Band						Mean Scaled Score	
	(n)	(%)*	Band 4	Band 5	Band 6	Band 7	Band 8	Band 9	School	State
2008	114	94	8	26	39	14	11	3	502.5	531.1

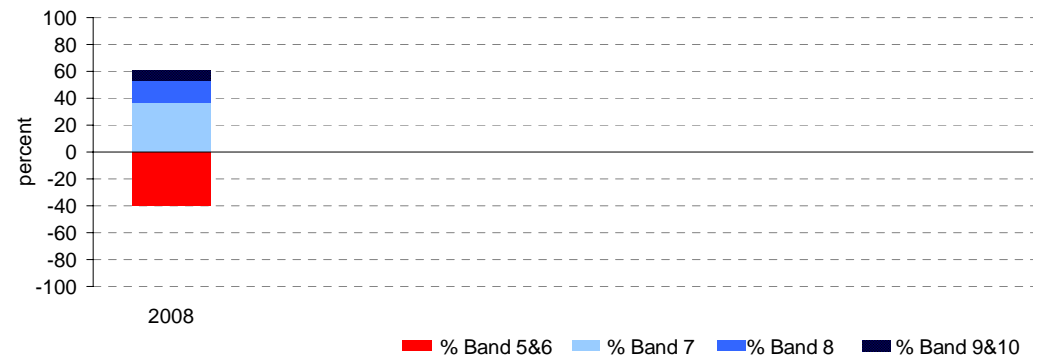
## Year 9

	student participation		Percent of students by NAP Band						Mean Scaled Score	
	(n)	(%)*	Band 5	Band 6	Band 7	Band 8	Band 9	Band 10	School	State
2008	144	89	4	35	37	16	6	2	548.9	572.5

Percent of students by NAP Band

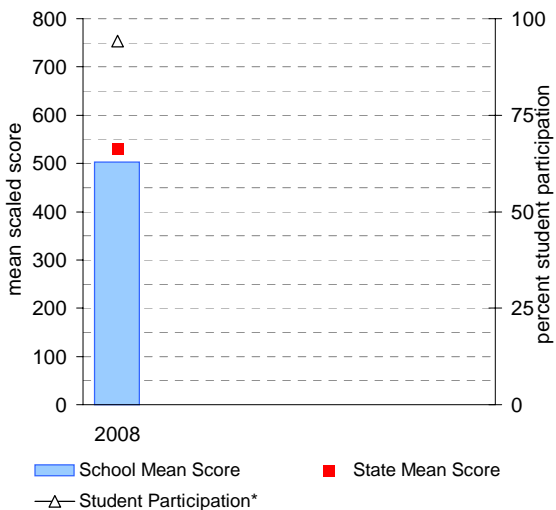


Percent of students by NAP Band

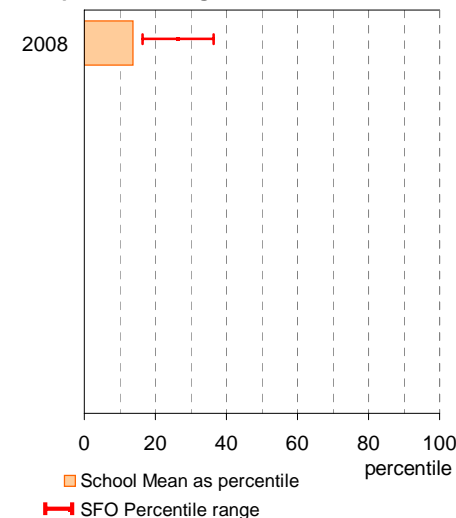


## Year 7

School Mean against State Mean, including Participation

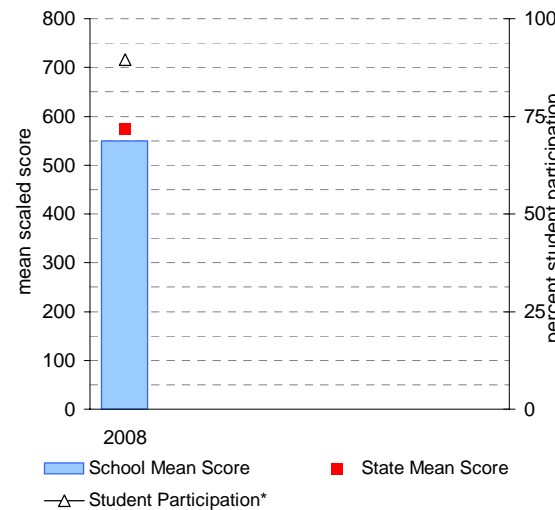


School Mean as percentile against SFO percentile range

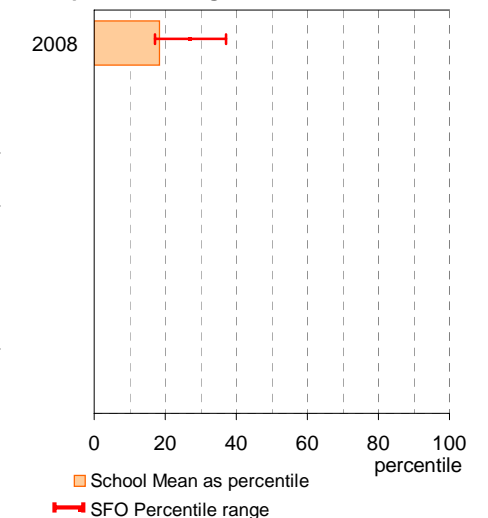


## Year 9

School Mean against State Mean, including Participation



School Mean as percentile against SFO percentile range



# NAPLAN Year 7 and 9: Writing

School no: 8718

School name: Kurunjang Secondary College

Source of data: Victorian Curriculum and Assessment Authority.

Explanation: The National Assessment Program - Literacy and Numeracy (NAPLAN) is conducted each year for students in Years 3, 5, 7 and 9. For more detailed NAPLAN data, refer to the NAPLAN Data Service website at <http://naplands.vcaa.vic.edu.au>. A reference guide for analysing NAPLAN data is available at <http://www.vcaa.vic.edu.au/vcaa/prep10/naplan/schools/analysingnaplandata.pdf>.

Notes: \* % student participation = (students who participated in NAPLAN / February enrolments) \* 100

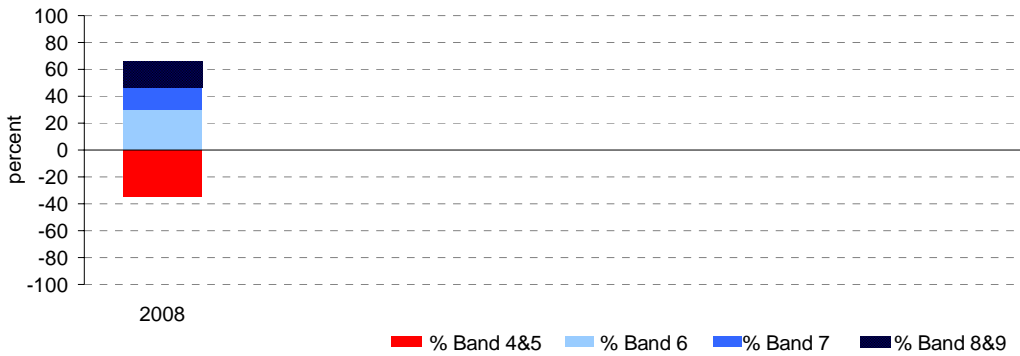
## Year 7

	student participation		Percent of students by NAP Band						Mean Scaled Score	
	(n)	(%)*	Band 4	Band 5	Band 6	Band 7	Band 8	Band 9	School	State
2008	114	94	12	22	30	17	14	5	509.5	534.0

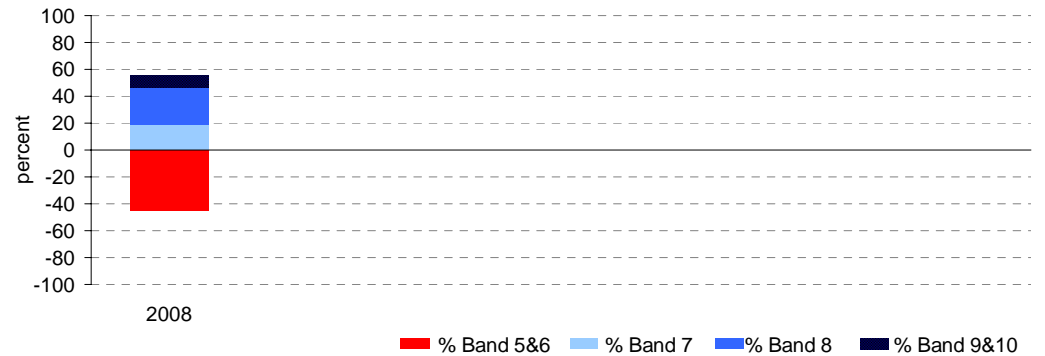
## Year 9

	student participation		Percent of students by NAP Band						Mean Scaled Score	
	(n)	(%)*	Band 5	Band 6	Band 7	Band 8	Band 9	Band 10	School	State
2008	143	89	14	31	19	27	6	4	547.0	571.4

Percent of students by NAP Band

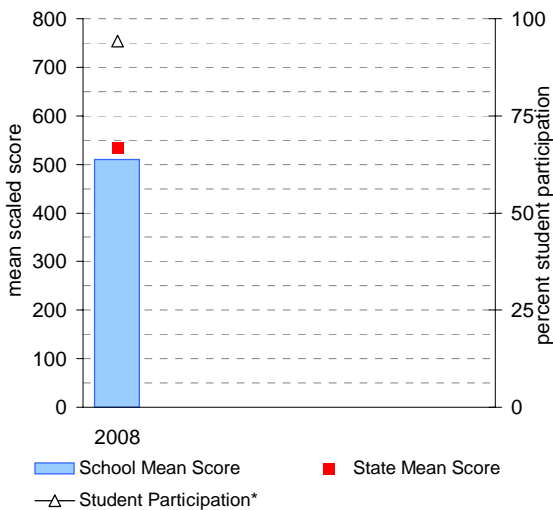


Percent of students by NAP Band

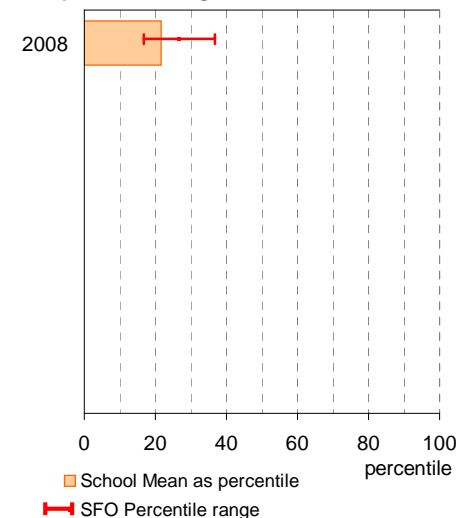


## Year 7

School Mean against State Mean, including Participation

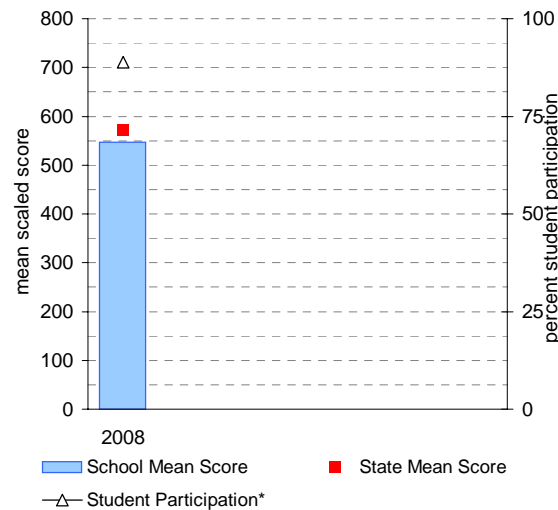


School Mean as percentile against SFO percentile range

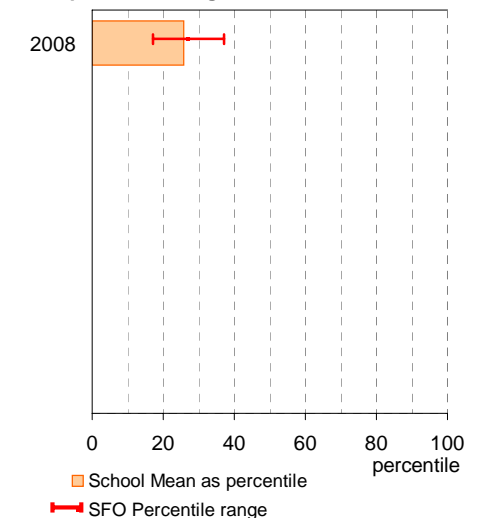


## Year 9

School Mean against State Mean, including Participation



School Mean as percentile against SFO percentile range



# NAPLAN Year 7 and 9: Numeracy

School no: 8718

School name: Kurunjang Secondary College

Source of data: Victorian Curriculum and Assessment Authority.

Explanation: The National Assessment Program - Literacy and Numeracy (NAPLAN) is conducted each year for students in Years 3, 5, 7 and 9. For more detailed NAPLAN data, refer to the NAPLAN Data Service website at <http://naplands.vcaa.vic.edu.au>. A reference guide for analysing NAPLAN data is available at <http://www.vcaa.vic.edu.au/vcaa/prep10/naplan/schools/analysingnaplandata.pdf>.

Notes: \* % student participation = (students who participated in NAPLAN / February enrolments) \* 100

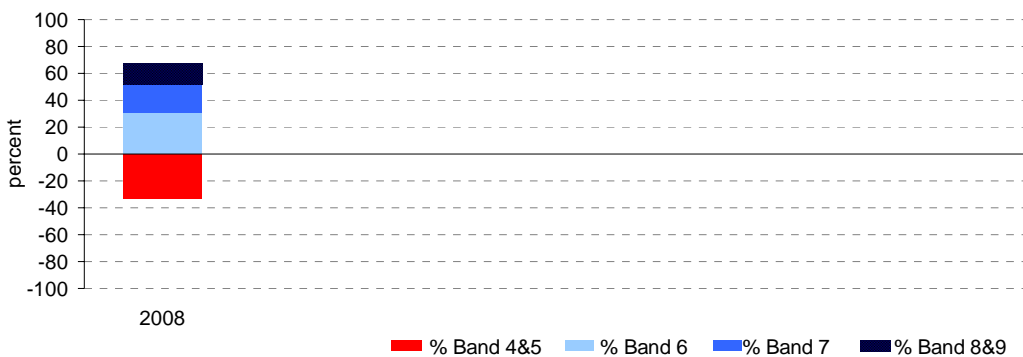
## Year 7

	student participation		Percent of students by NAP Band						Mean Scaled Score	
	(n)	(%)*	Band 4	Band 5	Band 6	Band 7	Band 8	Band 9	School	State
2008	121	100	6	27	31	21	14	2	512.4	541.2

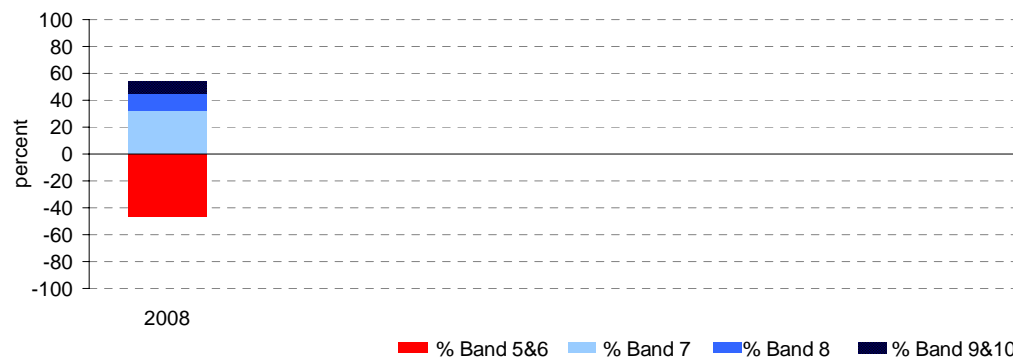
## Year 9

	student participation		Percent of students by NAP Band						Mean Scaled Score	
	(n)	(%)*	Band 5	Band 6	Band 7	Band 8	Band 9	Band 10	School	State
2008	141	88	10	36	33	13	7	1	544.8	579.0

Percent of students by NAP Band

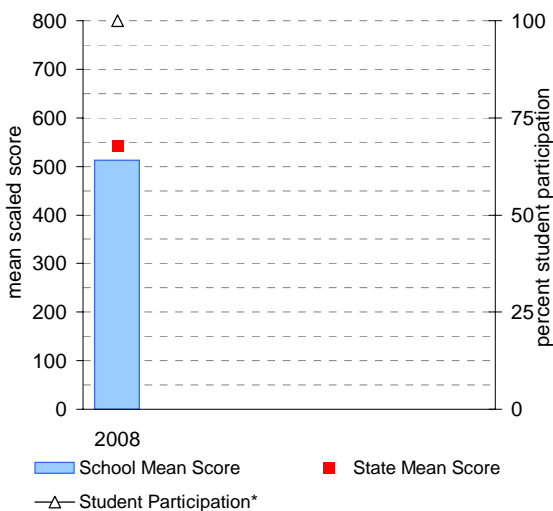


Percent of students by NAP Band

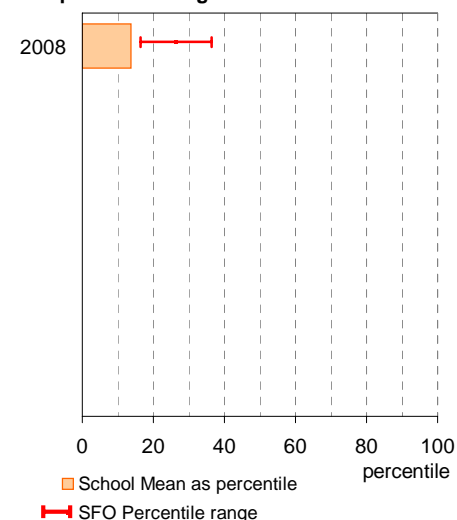


## Year 7

School Mean against State Mean, including Participation

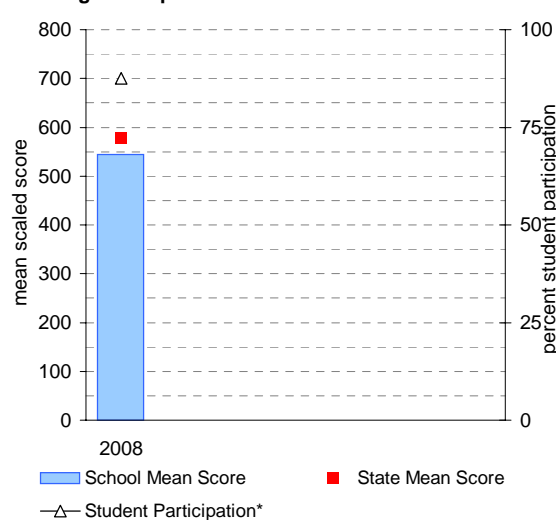


School Mean as percentile against SFO percentile range

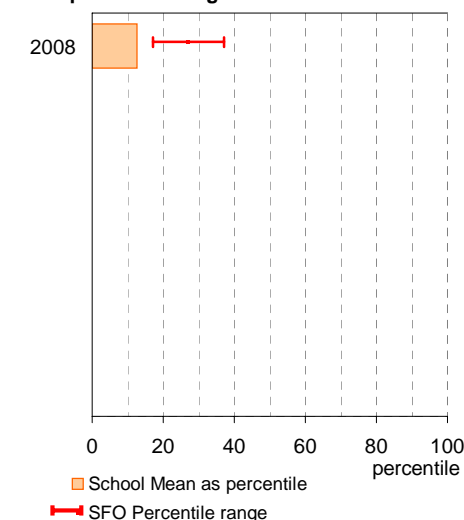


## Year 9

School Mean against State Mean, including Participation



School Mean as percentile against SFO percentile range



# AIM Year 7 and 9: Reading

School no: 8718

School name: Kurunjang Secondary College

Source of data: Victorian Curriculum and Assessment Authority.

Explanation: The Achievement Improvement Monitor (AIM) was a statewide assessment program conducted each year up until and including 2007 for students in Years 3, 5, 7 and 9. This has now been replaced by NAPLAN. For more detailed AIM data, refer to the AIM Data Service website at <http://aimds.vcaa.vic.edu.au>.

Notes: \* The school trendline is only plotted when there is data for each calendar year.  
 \*\* % student participation = (students who participated in AIM / Feb enrolments) \* 100

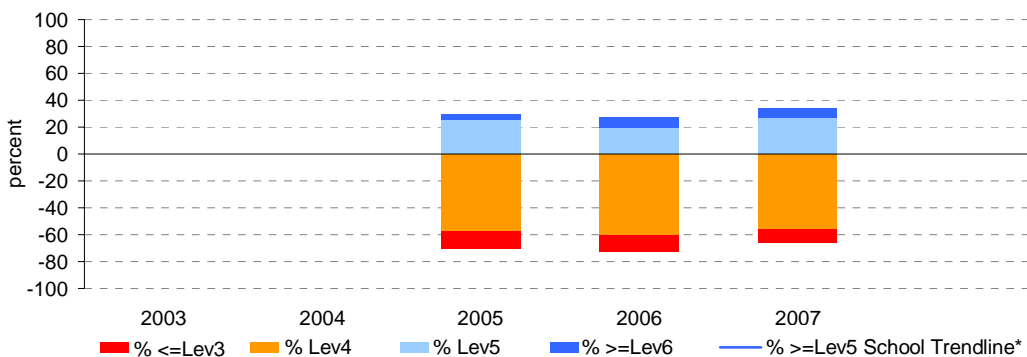
## Year 7

	student participation		Percent of students by VELs level							Mean CSF / VELs Score	
	(n)	(%)**	Lev1	Lev2	Lev3	Lev4	Lev5	Lev6	Lev6E	School	State
2003											4.1
2004											4.2
2005	116	71	0	0	13	58	26	3	0	3.8	4.2
2006	145	91	0	0	12	61	20	8	0	3.8	4.2
2007	126	90	0	0	10	56	27	7	0	3.8	4.1

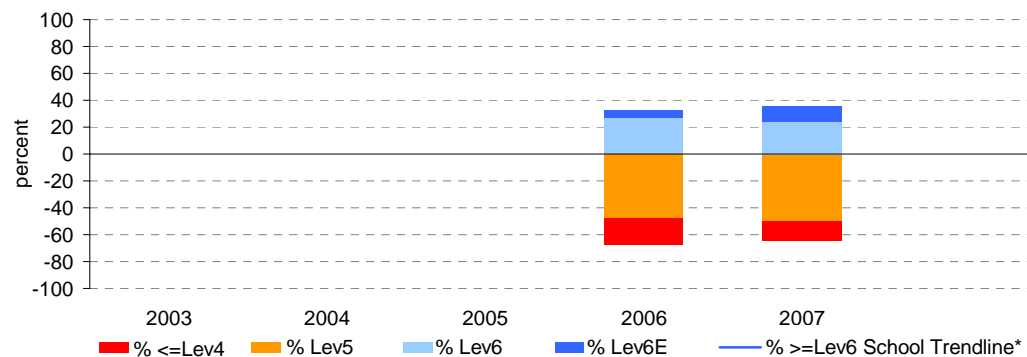
## Year 9

	student participation		Percent of students by VELs level							Mean CSF / VELs Score	
	(n)	(%)**	Lev1	Lev2	Lev3	Lev4	Lev5	Lev6	Lev6E	School	State
2003											
2004											
2005											
2006	156	94	0	0	0	20	47	27	6	4.7	5.1
2007	142	80	0	0	0	14	51	24	11	4.8	5.1

Percent of students by VELs level

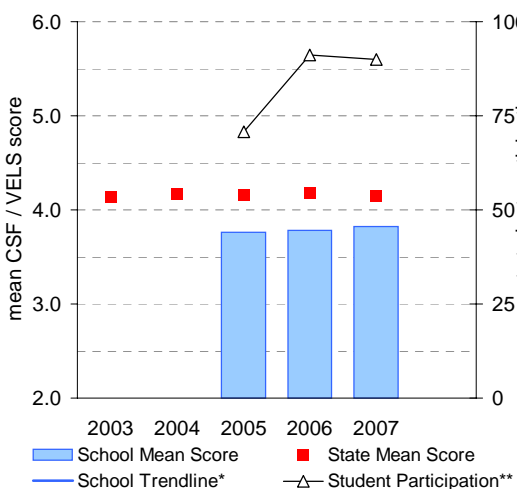


Percent of students by VELs level

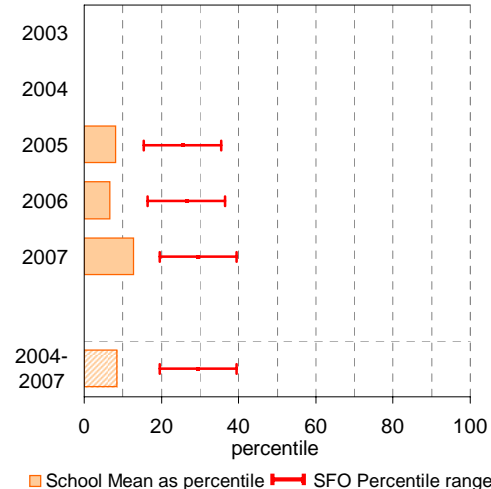


## Year 7

School Mean against State Mean, including Participation

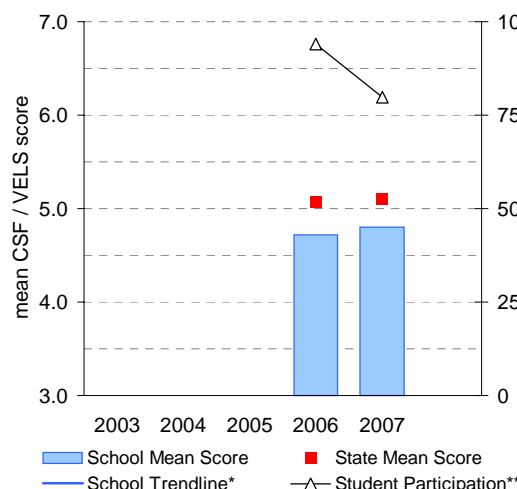


School Mean as percentile against SFO percentile range

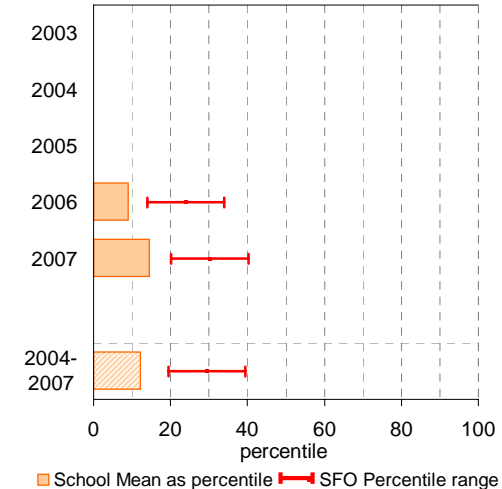


## Year 9

School Mean against State Mean, including Participation



School Mean as percentile against SFO percentile range



# AIM Year 7 and 9: Mathematics

School no: 8718

School name: Kurunjang Secondary College

Source of data: Victorian Curriculum and Assessment Authority.

Explanation: The Achievement Improvement Monitor (AIM) was a statewide assessment program conducted each year up until and including 2007 for students in Years 3, 5, 7 and 9. This has now been replaced by NAPLAN. For more detailed AIM data, refer to the AIM Data Service website at <http://aimds.vcaa.vic.edu.au>.

Notes: \* The school trendline is only plotted when there is data for each calendar year.

\*\* % student participation = (students who participated in AIM / Feb enrolments) \* 100

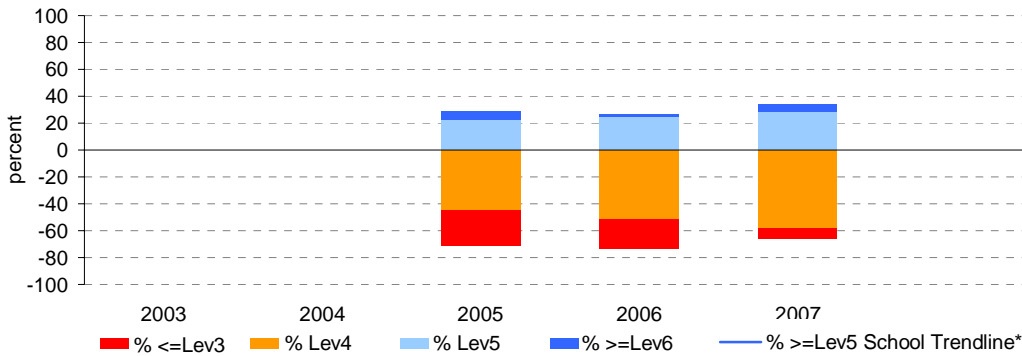
## Year 7

	student participation		Percent of students by VELs level							Mean CSF / VELs Score	
	(n)	(%)**	Lev1	Lev2	Lev3	Lev4	Lev5	Lev6	Lev6E	School	State
2003											4.0
2004											4.0
2005	123	75	0	0	26	45	23	7	0	3.6	4.0
2006	138	87	0	0	22	51	25	2	0	3.6	4.0
2007	124	89	0	0	8	58	28	6	0	3.8	4.1

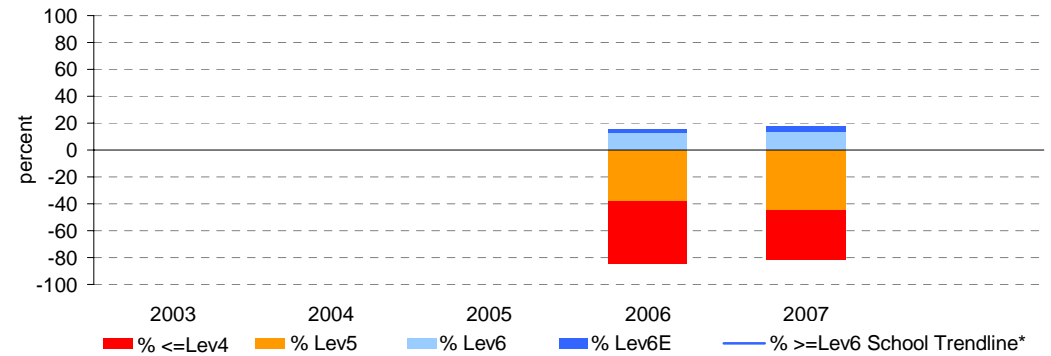
## Year 9

	student participation		Percent of students by VELs level							Mean CSF / VELs Score	
	(n)	(%)**	Lev1	Lev2	Lev3	Lev4	Lev5	Lev6	Lev6E	School	State
2003											
2004											
2005											
2006	158	95	0	0	0	46	38	13	3	4.4	4.8
2007	145	81	0	0	0	37	45	14	4	4.4	4.8

Percent of students by VELs level

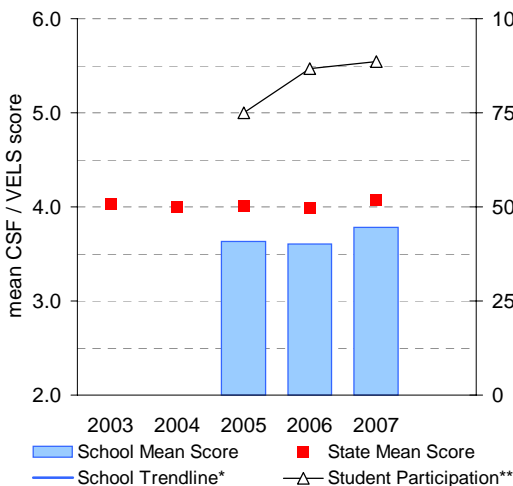


Percent of students by VELs level

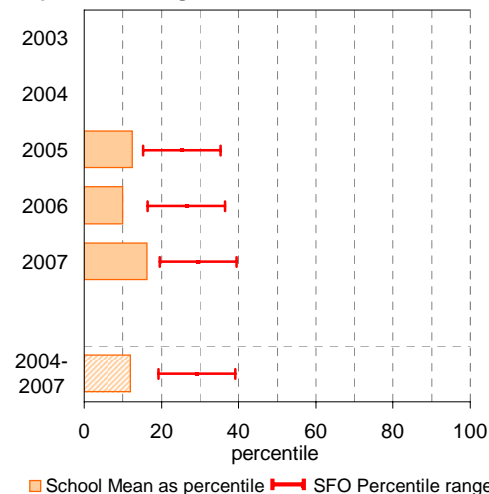


## Year 7

School Mean against State Mean, including Participation

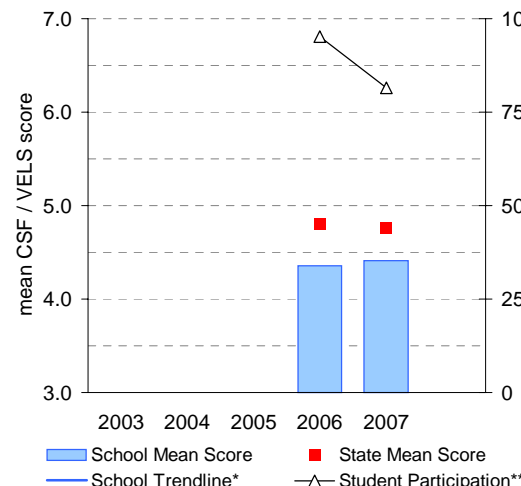


School Mean as percentile against SFO percentile range

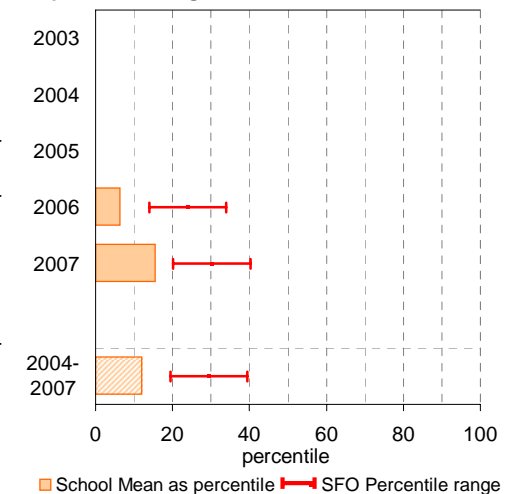


## Year 9

School Mean against State Mean, including Participation



School Mean as percentile against SFO percentile range



# VCE

**School no:** 8718

**School name:** Kurunjang Secondary College

**Explanation:** Only 2008 studies, which at least 1 student completed, are included.

**Source of data:** Victorian Curriculum and Assessment Authority.

Notes:	2004		2005		2006		2007		2008	
	No. of students	school mean	No. of students	school mean	No. of students	school mean	No. of students	school mean	No. of students	school mean
- After allstudy, English, Further Maths and Maths Methods, studies are listed in descending order of the number of students in the latest year.										
- From 2005, VET study scores are included.										
- From 2005, data is based on 'reported' study scores, not 'achieved' study scores.										
allstudy		24.7		23.6		24.6		24.1		24.3
English EN01	59	25.8	52	23.2	57	24.6	52	23.7	48	22.5
Further Mathematics MA07	58	27.2	65	23.7	79	26.2	53	23.4	45	24.8
Mathematical Methods MA08	21	24.2	21	21.3	35	20.7	18	24.3	19	21.3
English Language EL01	35	21.9	66	21.0	61	21.5	34	20.3	29	21.2
Health & Human Dev. HH03	23	25.9	21	23.4	17	26.2	32	24.5	20	26.1
IT Applications IT02	20	24.5	29	25.6	21	27.4	14	26.5	20	26.5
Biology BI03	17	23.0	23	23.5	17	24.0	16	23.5	17	24.5
Studio Arts SA03	26	22.5	26	25.0	23	27.7	13	27.8	17	24.3
Psychology PY03	14	27.1	21	22.2	37	23.4	28	23.5	16	27.8
Physical Ed. PE03	12	24.7	12	22.1	17	22.5	12	22.7	15	21.7
Literature LI01	16	22.3	5	23.4	15	25.8			14	21.9
Systems Engineering SE03							1	33.0	12	30.3
Australian History HI08									11	22.1
Food & Tech. FY03	8	32.9	16	27.7	19	28.5	14	24.6	11	28.9
Design & Tech. DT03	20	25.8	16	26.8	26	26.7	17	30.4	10	29.0
Physics PH03			12	21.5	10	20.6	9	24.8	10	21.3
Visual Communication & Design VC03	19	28.5	23	26.5	21	28.6	13	25.1	10	27.4
Art AR03			6	28.3	3	29.3	7	24.1	9	24.6
Legal Studies LS03	10	22.3	16	21.9	14	24.1			9	26.2
Chemistry CH03	13	25.0	7	20.1	12	23.4	7	23.4	8	21.6
Multimedia (VCE VET) MU02			6	31.2	7	31.1	15	28.8	7	30.1
Drama DR03	11	19.1	14	22.5	5	25.0	2	25.5	5	20.0
Specialist Mathematics MA09	9	19.0	5	24.8	3	18.7	9	20.3	5	21.4
Business Admin (VCE VET) BU05			1	22.0			1	24.0	3	23.0
Hospitality (Comm. Cook) (VCE VET) HS07			2	24.5					3	27.3
Accounting AC03	14	25.1	4	25.3	11	28.3	10	28.4	2	25.0
Equine Industry (VCE VET) EQ02			4	21.3					2	16.5
Community Services Work (VCE VET) CT11					2	30.0	1	26.0	1	35.0
Electrotechnology (VCE VET) ET06									1	35.0
English ESL EN09									1	14.0

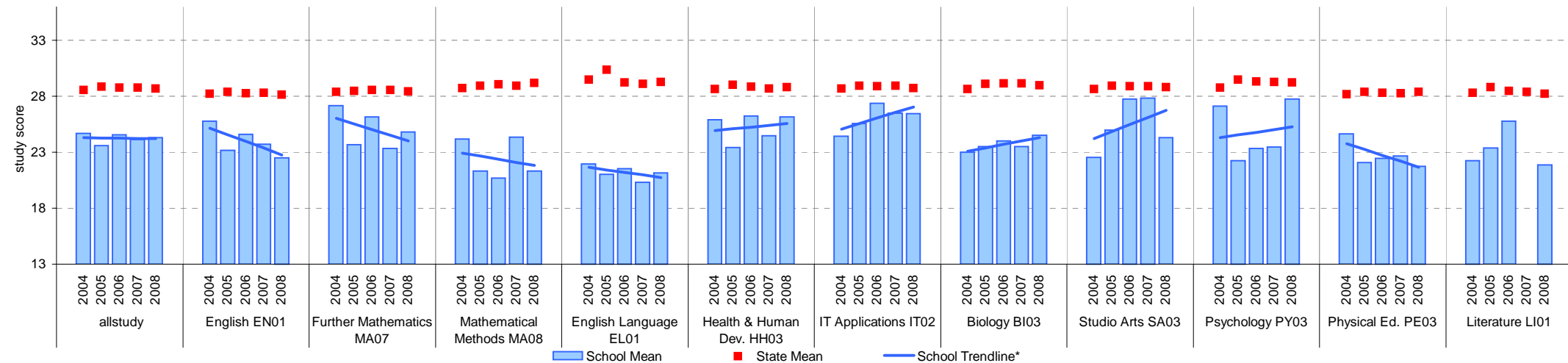
# VCE

School no: 8718

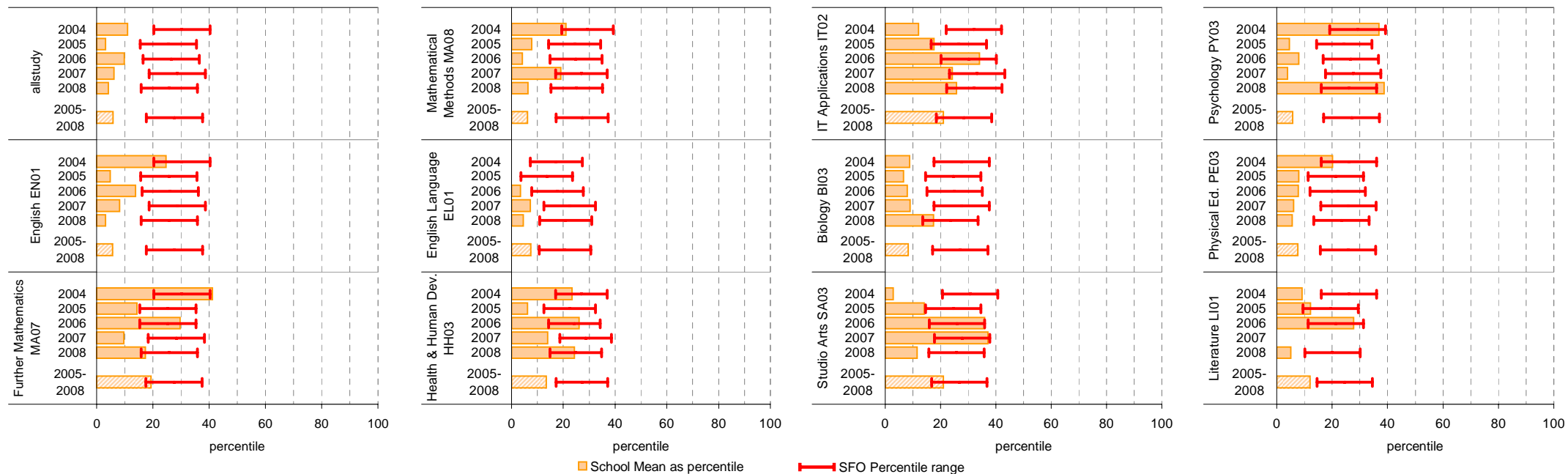
School name: Kurunjang Secondary College

Source of data: Victorian Curriculum and Assessment Authority.

## School Mean against State Mean



## School Mean as percentile against SFO percentile range



# VCE (cont'd)

School no: 8718

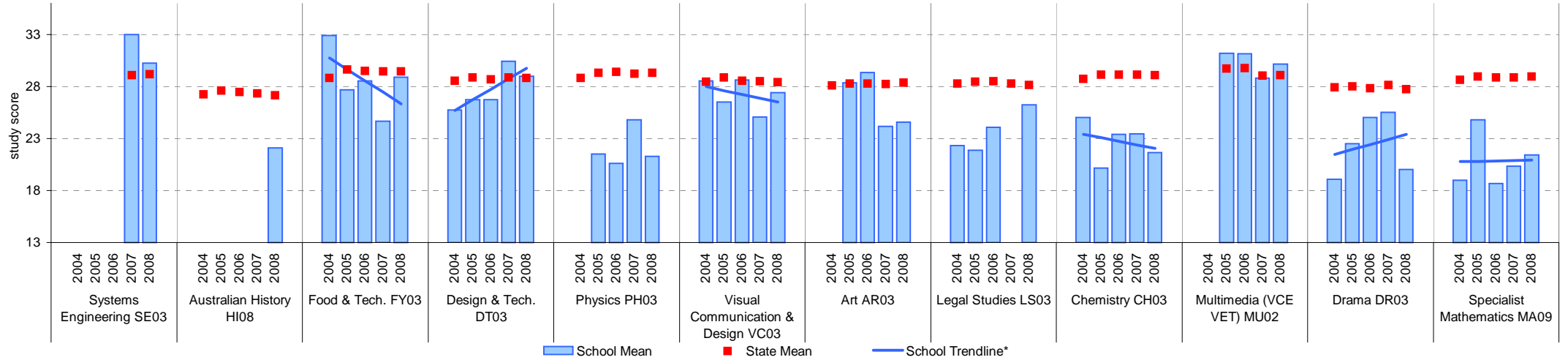
School name: Kurunjang Secondary College

Source of data: Victorian Curriculum and Assessment Authority.

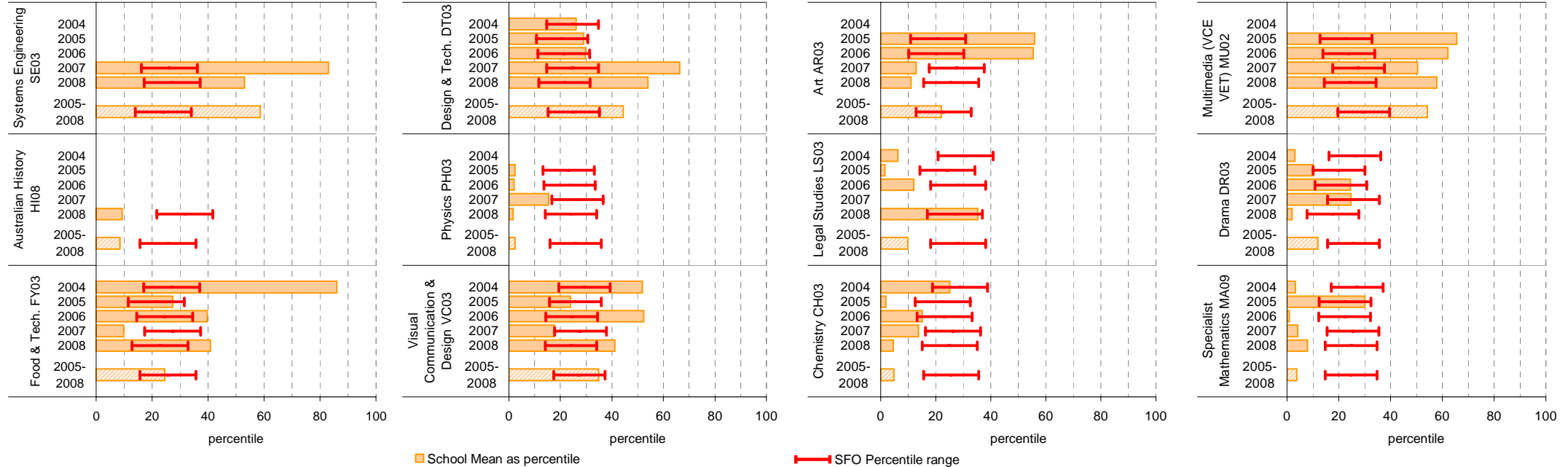
School Mean against State Mean

Notes: \* The school trendline is only plotted when there is data for each calendar year.

- After allstudy, EN01, MA07 and MA08, the remaining studies are charted in order of the number of students who completed that study in 2008, from highest to lowest.
- From 2005, VET study scores are included.
- From 2005, data is based on 'reported' study scores, not the 'achieved' study scores.



## School Mean as percentile against SFO percentile range



# VCE (cont'd)

School no: 8718

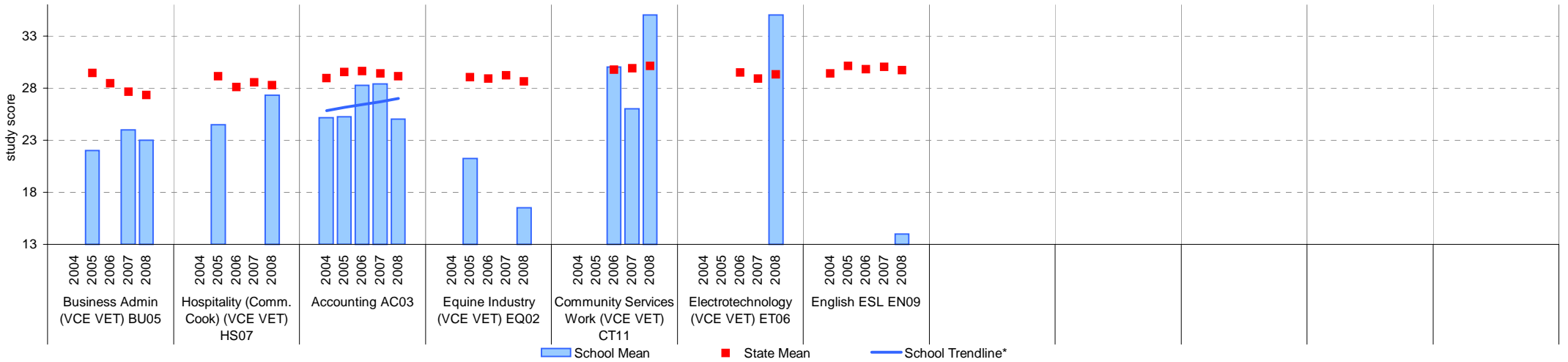
School name: Kurunjang Secondary College

Source of data: Victorian Curriculum and Assessment Authority.

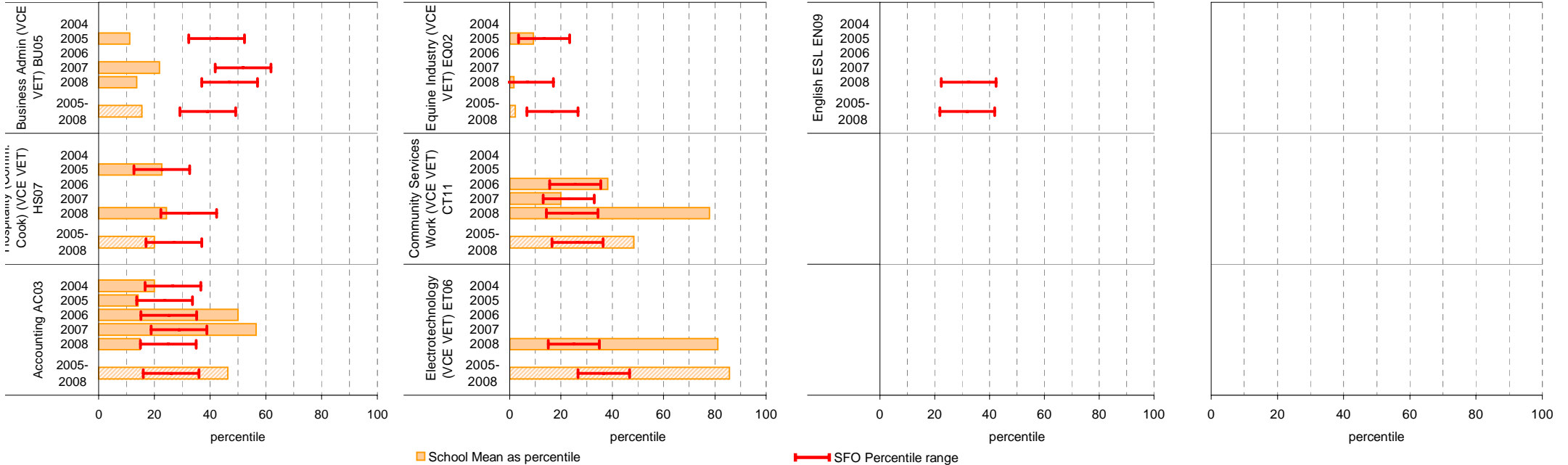
School Mean against State Mean

Notes: \* The school trendline is only plotted when there is data for each calendar year.

- After allstudy, EN01, MA07 and MA08, the remaining studies are charted in order of the number of students who completed that study in 2008, from highest to lowest.
- From 2005, VET study scores are included.
- From 2005, data is based on 'reported' study scores, not the 'achieved' study scores.



## School Mean as percentile against SFO percentile range

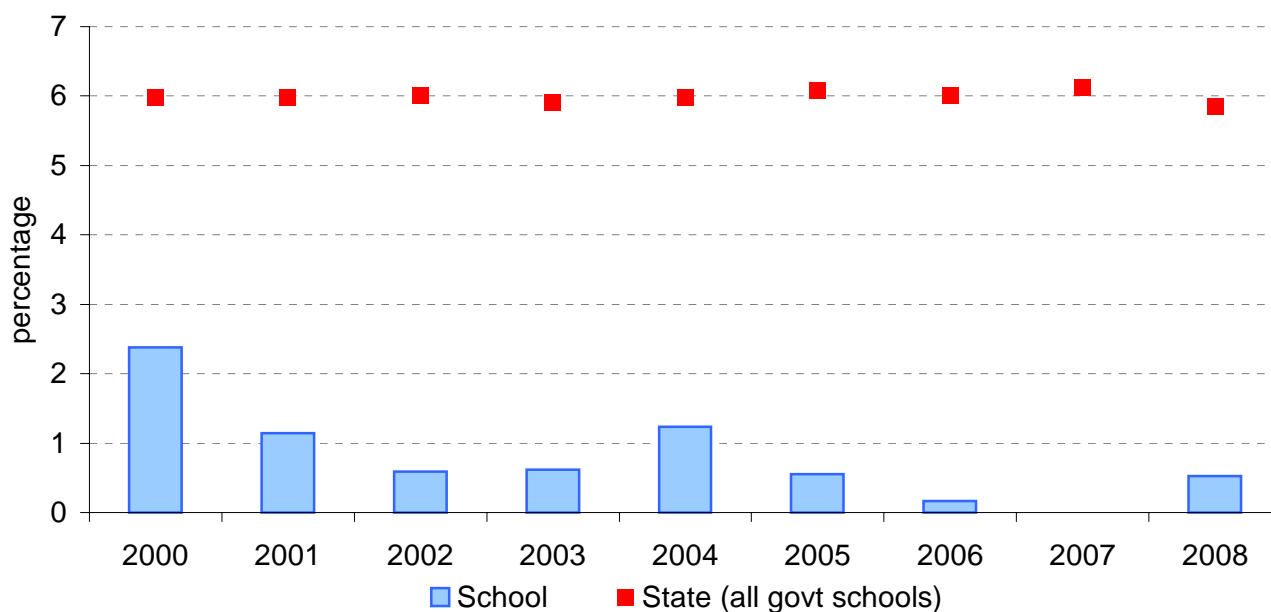


## VCE: Study Scores of 40 or more

<b>School no:</b>	<b>8718</b>
<b>School name:</b>	<b>Kurunjang Secondary College</b>
<b>Explanation:</b>	Of all VCE study scores, the percentage that were 40 or more.
<b>Source of data:</b>	Victorian Curriculum and Assessment Authority.

Year	School		State (all govt schools)
	Total study scores	% 40 or more*	% 40 or more
2000	504	2.4	6.0
2001	614	1.1	6.0
2002	511	0.6	6.0
2003	482	0.6	5.9
2004	485	1.2	6.0
2005	546	0.5	6.1
2006	590	0.2	6.0
2007	427	0	6.1
2008	380	0.5	5.9

VCE percentage of study scores of 40 or more\*, 2000 to 2008



**Note:**

- \* Prior to 2005, this data may not match the information published in *The Age*. Data presented on this page prior to 2005 does not include study scores from the small number of VET studies that are given study scores.
- From 2005, VET study scores are included.
- From 2005, data is based on 'reported' study scores, not 'achieved' study scores.

# VET

**School no:** 8718  
**School name:** Kurunjang Secondary College  
**Source of data:** Victorian Curriculum and Assessment Authority.

Notes: \* - The school trendline is only plotted when there is data for each calendar year.

1 - UOC = Unit(s) of Competence.

2 - % students based on yr10, 11 & 12 August enrolments.

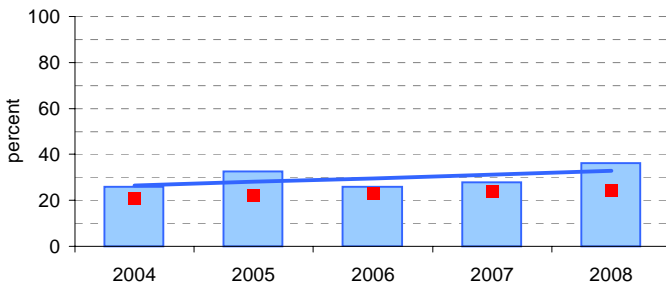
3 - Only includes students undertaking at least 1 UOC.

More detailed information is available on the VASS system provided by VCAA.

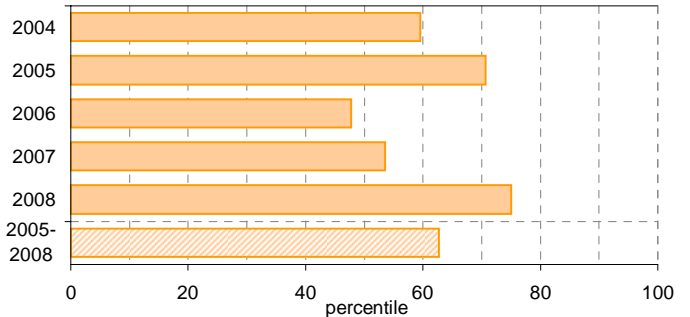
Participation						Completion			
School					State		School		State
Year	Level	No. students undertaking at least 1 UOC <sup>1</sup>	% students <sup>2</sup> undertaking at least 1 UOC <sup>1</sup>	Avg no. UOCs <sup>1</sup> undertaken per student <sup>3</sup>	% students <sup>2</sup> undertaking at least 1 UOC <sup>1</sup>	Avg no. UOCs <sup>1</sup> undertaken per student <sup>3</sup>	No. UOCs <sup>1</sup> with satisfactory result	% UOCs <sup>1</sup> with satisfactory result	% UOCs <sup>1</sup> with satisfactory result
2004	10	30	15.4	10.2	20.7	11.9	246	80.7	71.3
	11	72	45.3	10.3					
	12	16	15.7	9.8					
	10-12	118	25.9	10.2					
2005	10	49	30.4	12	22.3	11.9	484	82.2	72.6
	11	66	37.9	9.5					
	12	35	27.6	8.1					
	10-12	150	32.5	10					
2006	10	38	21.8	10.5	23.0	12.0	290	72.5	75.6
	11	53	34.6	9					
	12	29	21	9.9					
	10-12	120	25.8	9.7					
2007	10	31	20.3	9.6	23.8	11.7	245	82.2	76.4
	11	45	35.7	8.8					
	12	29	29.2	10.4					
	10-12	105	27.8	9.5					
2008	10	57	35	8.8	24.6	12.0	461	92.4	76.7
	11	51	43.3	9.9					
	12	23	28.4	12.1					
	10-12	131	36.2	9.8					

## Participation - % Yr10-12 students<sup>2</sup> undertaking at least 1 UOC<sup>1</sup>

### School against State

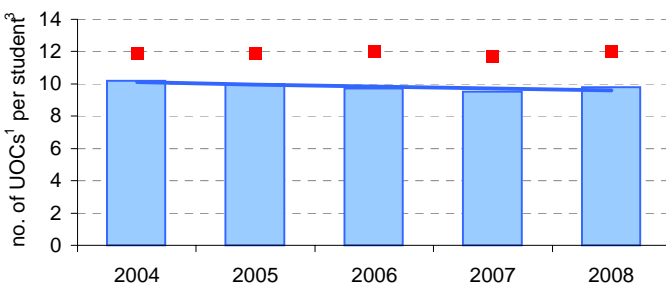


### School as percentile

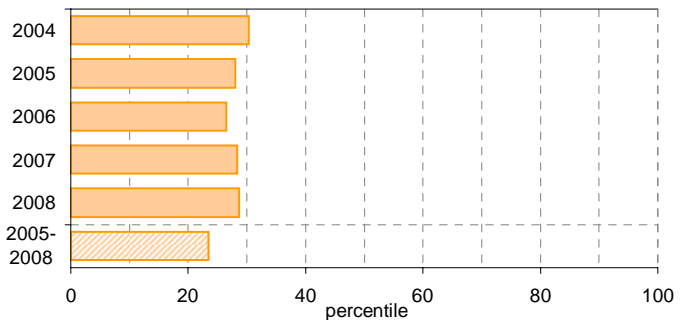


## Avg no. UOCs<sup>1</sup> undertaken per student<sup>3</sup>

### School Mean against State Mean

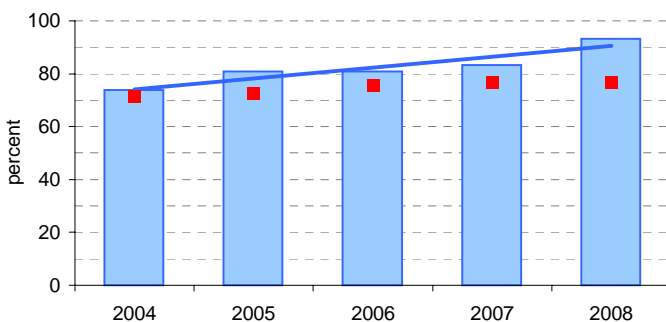


### School Mean as percentile

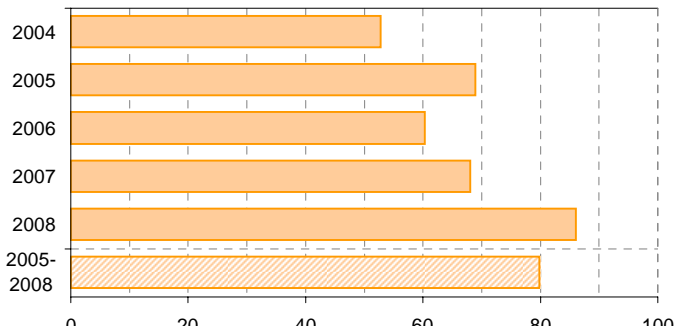


## Completion - % UOCs<sup>1</sup> with satisfactory result

### School against State



### School as percentile



Legend: School (blue bar), State Mean (red square), School Trendline\* (blue line)

Legend: School as percentile (orange bar)

# VCAL

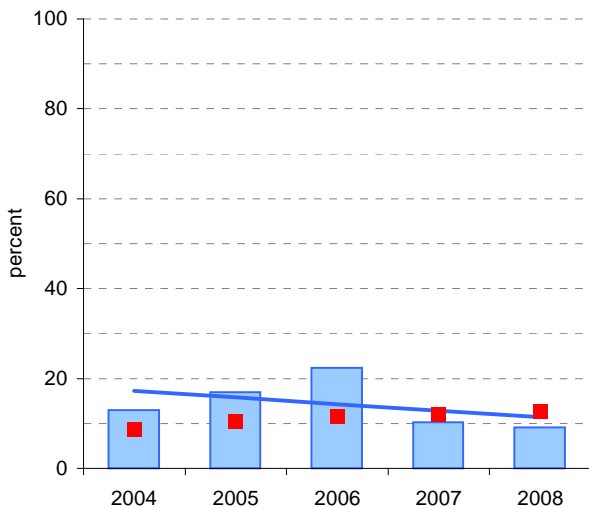
**School no:** 8718  
**School name:** Kurunjang Secondary College  
**Explanation:** 'No. of VCAL credits undertaken' is calculated by summing the number of credits undertaken by each VCAL student across all VCAL students.  
 The data contained in this page is for all VCAL strands and levels combined.

**Source of data:** Victorian Curriculum and Assessment Authority.  
 More detailed information is available on the VASS system provided by VCAA.

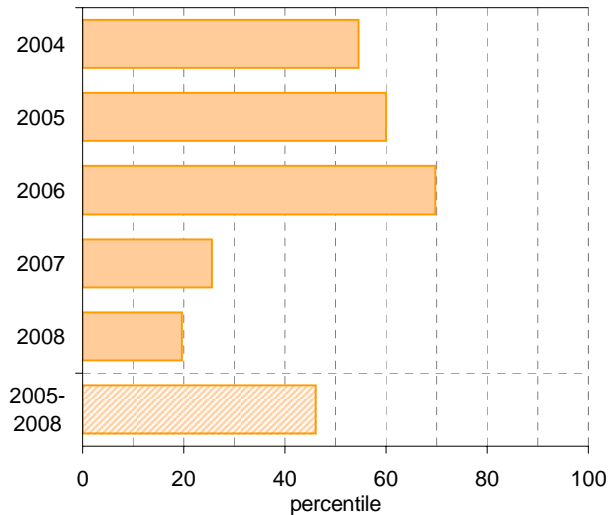
Notes: \* - The school trendline is only plotted when there is data for each calendar year.  
 1 - No. and % students based on yr11 & 12 August enrolments.

Participation						Completion		
School					State	School		State
Year	Year Level	No. students <sup>1</sup>	No. students undertaking VCAL	% students <sup>1</sup> undertaking VCAL	% students <sup>1</sup> undertaking VCAL	No. VCAL unit credits undertaken	% satisfactory completion of VCAL credits	% satisfactory completion of VCAL credits
2004	11-12	260.9	34	13.0	8.6	144	59.0	70.4
2005	11-12	301	51	16.9	10.4	263	63.5	72.9
2006	11-12	291.3	65	22.3	11.5	366	70.5	77.7
2007	11-12	225.3	23	10.2	12.0	146	93.2	76.5
2008	11-12	198.7	18	9.1	12.7	72	91.7	75.8

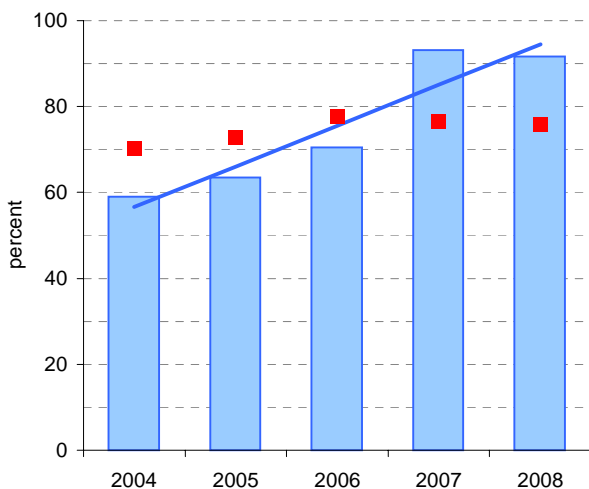
**Participation - % Yr11-12 students<sup>1</sup> undertaking VCAL School against State**



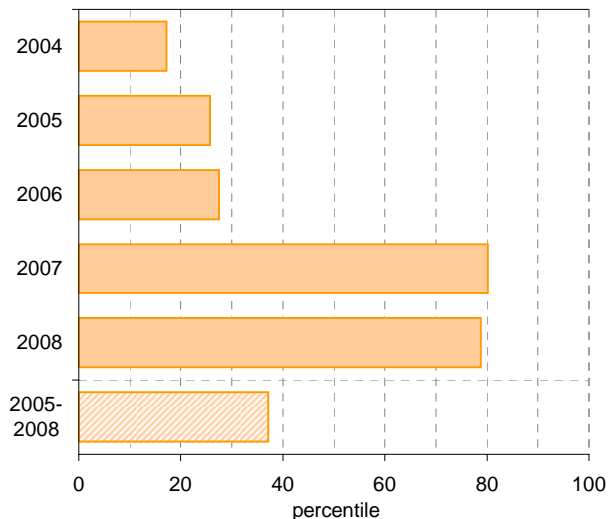
**School as percentile**



**Completion - % satisfactory completion of VCAL credits School against State**



**School as percentile**



■ School   
 ■ State Mean   
 — School Trendline\*   
 ■ School as percentile

# Teacher Assessment of Student Progress (PSD students)

**School no:** 8718

**School name:** Kurunjang Secondary College

**Explanation:** Teachers assess their students' progress against the 8 VELS Domains / CSF KLAs using a 6-point scale (students in special schools and those who cannot be assessed against the VELS / CSF).

**Source of data:** Data transmitted from school to DEECD via an online web-form.

	No progress progress (%)	Little progress (%)	Satisfactory progress (%)	Good progress (%)	Very good progress (%)	Excellent progress (%)	Total students assessed <sup>1</sup> (no.)
<b>2004 (by CSF KLA)</b>							
English							
Mathematics							
Science							
Technology							
The Arts							
H&PE							
SOSE							
<b>2005 (by CSF KLA)</b>							
English							
Mathematics							
Science							
Technology							
The Arts							
H&PE							
SOSE							
<b>2006 (by VELS Domain)</b>							
English							
Mathematics							
Science							
ICT							
The Arts							
H&PE							
Civics & Citizenship							
<b>2007 (by VELS Domain)</b>							
English							
Mathematics							
Science							
ICT							
The Arts							
H&PE							
Civics & Citizenship							
<b>2008 (by VELS Domain)</b>							
English							
Mathematics							
Science							
ICT							
The Arts							
H&PE							
Civics & Citizenship							
<b>2007 Secondary state benchmarks (by VELS Domain)*</b>							
English	3	24	37	23	10	3	
Mathematics	4	25	36	21	9	4	
Science	4	15	52	17	8	4	
ICT	5	10	52	17	9	7	
The Arts	4	12	31	31	7	14	
H&PE	5	11	39	20	21	4	
Civics & Citizenship	5	13	51	17	10	4	

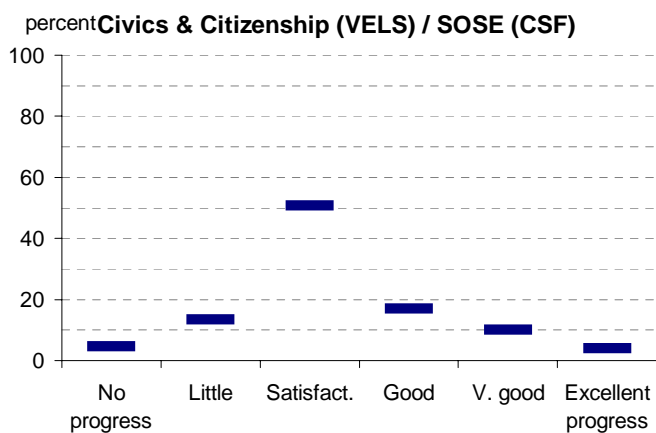
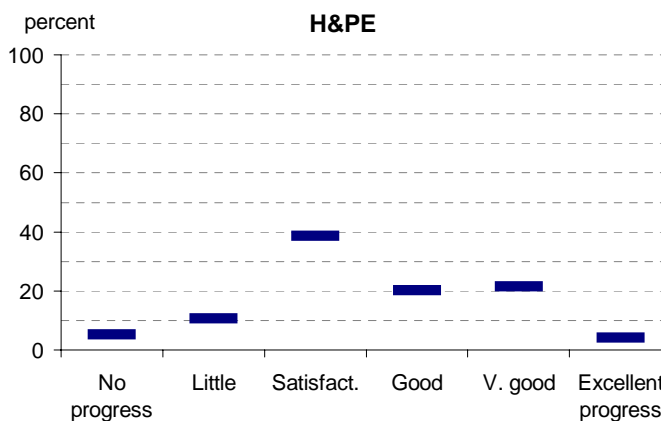
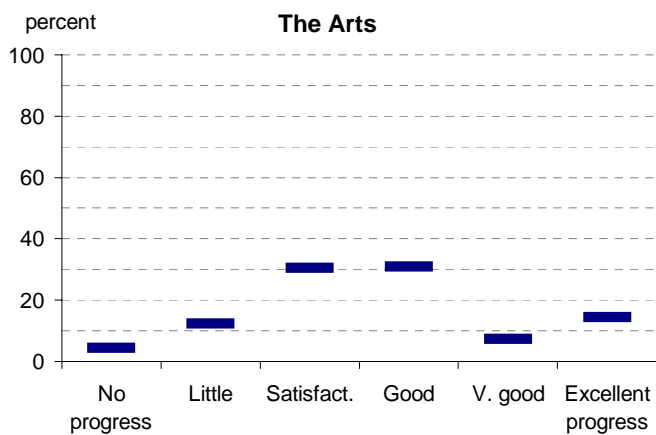
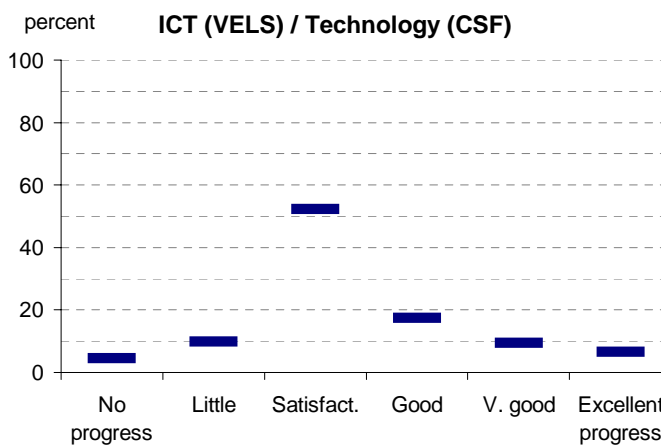
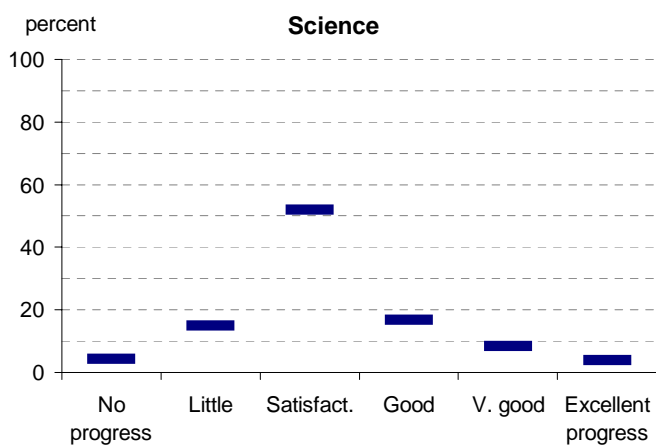
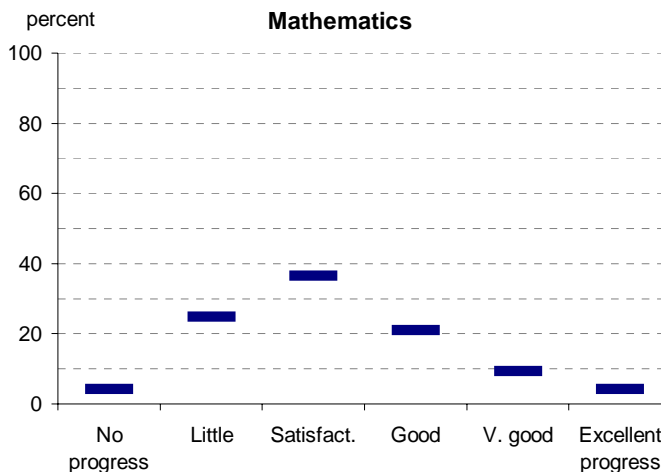
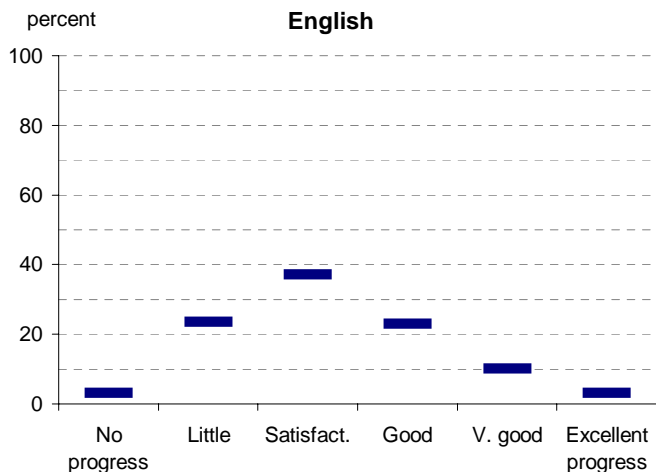
Notes: <sup>1</sup> If schools provided percentages only, it is not possible to report the number of students assessed. In these cases, the total percentage (100) will be shown.

\* 2008 benchmarks will be calculated in August, when data from all schools has been submitted.

# Teacher Assessment of Student Progress (PSD students)

School no: 8718

School name: Kurunjang Secondary College



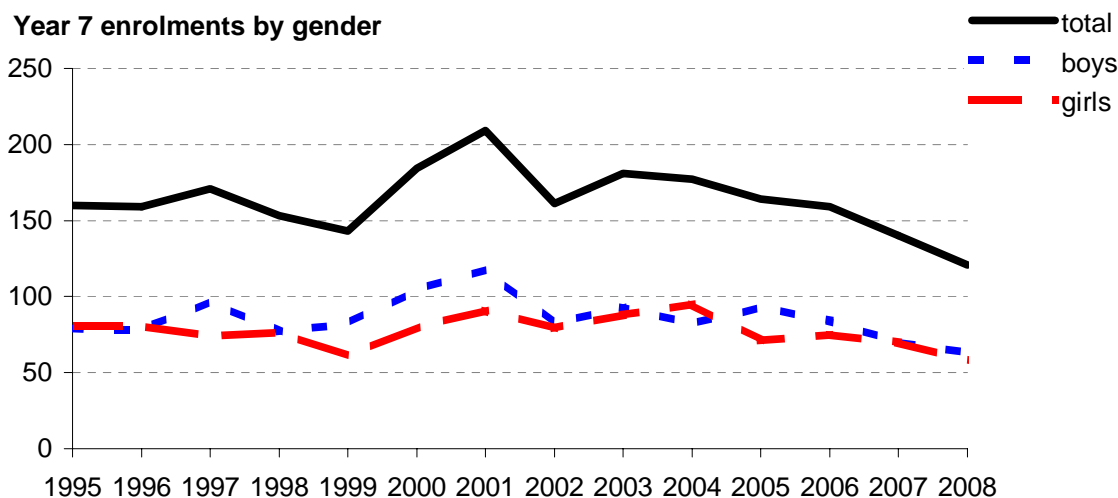
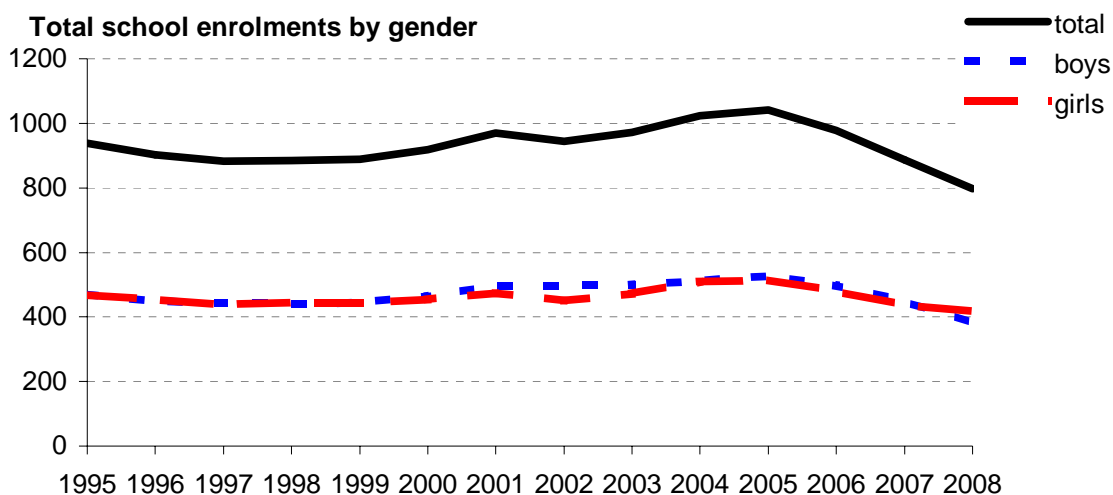
- 2004 (by CSF KLA)
- 2005 (by CSF KLA)
- 2006 (by VELS Domain)
- 2007 (by VELS Domain)
- 2008 (by VELS Domain)
- 2007 Secondary state benchmarks (by VELS Domain)\*

Notes: \* 2008 benchmarks will be calculated in August, when data from all schools has been submitted.

# Enrolments

**School no:** 8718  
**School name:** Kurunjang Secondary College  
**Explanation:** Enrolments at February census.  
**Source of data:** February census.

Year	Total school enrolment			Prep enrolment			Year 7 enrolments		
	boys	girls	total	boys	girls	total	boys	girls	total
1995	469	469	938				79	81	160
1996	449	453	902				78	81	159
1997	444	438	882				97	74	171
1998	440	444	884				77	76	153
1999	445	444	889				82	61	143
2000	463	455	918				104	80	184
2001	496	475	970				118	91	209
2002	495	450	945				82	79	161
2003	500	473	972				93	88	181
2004	513	510	1023				82	95	177
2005	528	513	1041				93	71	164
2006	497	480	978				84	75	159
2007	450	437	887				70	70	140
2008	381	417	797				63	58	121



# Apparent Student Retention

Note: \* The school trendline is only plotted when there is data for each calendar year.

School no: 8718

School name: Kurunjang Secondary College

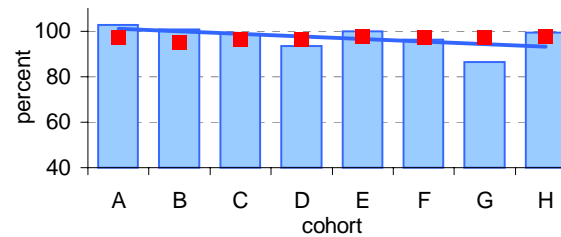
Explanation: Apparent retention rates are based on enrolments. For example, Year 7Feb-12Aug apparent retention refers to year 12 enrolment of students in full-time school education in August expressed as a percentage of year 7 enrolments in February five years earlier.

Source of data: February and August census.

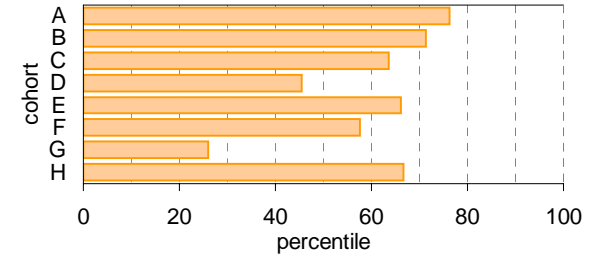
## Year 7 (Feb) - 10 (Aug)

	Cohorts:	A	B	C	D	E	F	G	H
Year 7		1998	1999	2000	2001	2002	2003	2004	2005
Year 10		2001	2002	2003	2004	2005	2006	2007	2008
Year 7 (Feb)	no.	153	143	184.4	209	161	181	177.2	164
Year 10 (Aug)	no.	157	144	182	195	161	174.4	153	163
Year 7 (Feb) - 10 (Aug)	%	102.6	100.7	98.7	93.3	100.0	96.4	86.3	99.4
State mean	%	97.3	95.0	96.6	96.3	97.6	97.3	97.4	97.6

## School against State

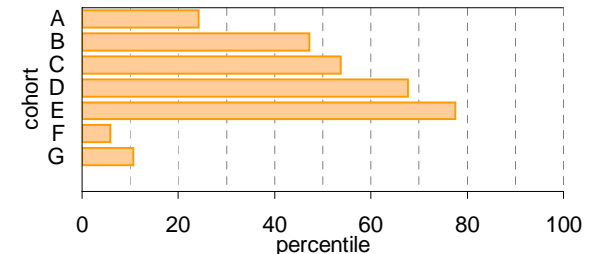
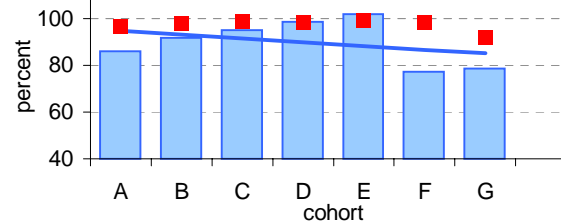


## School as percentile



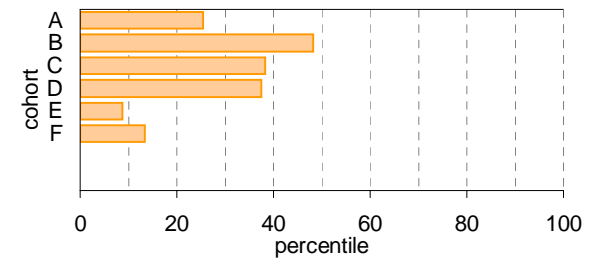
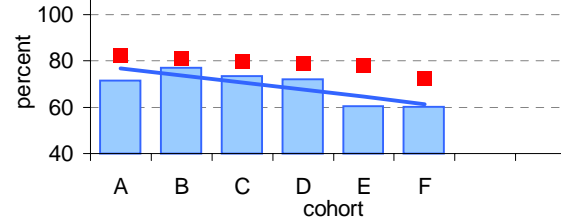
## Year 10 (Aug) - 11 (Feb)

	Cohorts:	A	B	C	D	E	F	G
Year 10		2001	2002	2003	2004	2005	2006	2007
Year 11		2002	2003	2004	2005	2006	2007	2008
Year 10 (Aug)	no.	157	144	182	195	161	174.4	153
Year 11 (Feb)	no.	135	132.1	172.7	192	164	134.5	120.1
Year 10 (Aug) - 11 (Feb)	%	86.0	91.7	94.9	98.5	101.9	77.1	78.5
State mean	%	96.2	97.7	98.7	98.2	99.0	98.2	92.0



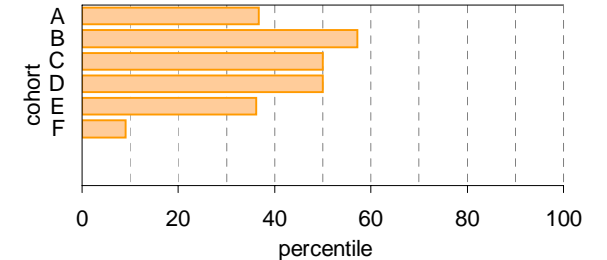
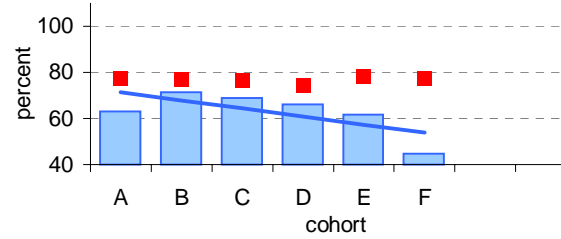
## Year 11 (Feb) - 12 (Aug)

	Cohorts:	A	B	C	D	E	F
Year 11		2002	2003	2004	2005	2006	2007
Year 12		2003	2004	2005	2006	2007	2008
Year 11 (Feb)	no.	135	132.1	172.7	192	164	134.5
Year 12 (Aug)	no.	96.5	101.9	127	138.3	99.3	80.9
Year 11 (Feb) - 12 (Aug)	%	71.5	77.1	73.5	72.0	60.5	60.1
State mean	%	82.5	81.0	79.8	78.8	78.1	72.7



## Year 7 (Feb) - 12 (Aug)

	Cohorts:	A	B	C	D	E	F
Year 7		1998	1999	2000	2001	2002	2003
Year 12		2003	2004	2005	2006	2007	2008
Year 7 (Feb)	no.	153	143	184.4	209	161	181
Year 12 (Aug)	no.	96.5	101.9	127	138.3	99.3	80.9
Year 7 (Feb) - 12 (Aug)	%	63.1	71.3	68.9	66.2	61.7	44.7
State mean	%	77.2	76.9	76.8	74.6	78.2	77.5



Legend: School (blue bar), State Mean (red square), School Trendline\* (blue line)

Legend: School as percentile (orange bar)

# Real Student Retention

Notes: \* The school trendline is only plotted when there is data for each calendar year.  
 ^ 2008 benchmarks will be calculated in August, when data from all schools has been submitted.

**School no:** 8718

**School name:** Kurunjang Secondary College

**Explanation:** Real retention rates show the percentage of students who have been enrolled at the same school over a period of time.

For example, the formula for the real retention rate for Year 7Feb to 10Aug for school X in 2008 is as follows:

$$\frac{\text{(no. of students enrolled in Yr10 in school X as at August 2008 census and who enrolled prior to 1/3/2005, ie, enrolled in school X at beginning of Yr7)}}{\text{(enrolments in Yr7 Feb in 2005 according to census)}}$$

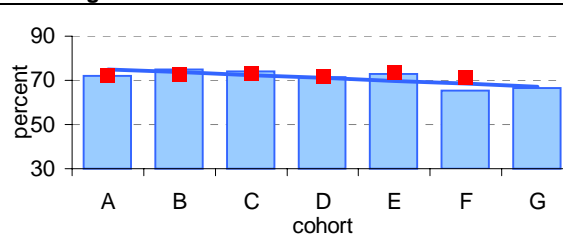
By definition, real school retention will be less than or equal to 100% (assuming there are no students repeating the year, or accelerating through years). Generally, real school retention rates are affected by students transferring to another school & students exiting the school system. They are a measure of the 'holding power' of the school.

**Source of data:** Data retrieved electronically from CASES21 at time of rollover.

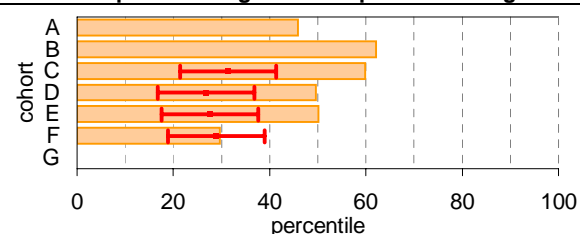
## Year 7 (Feb) - 10 (Aug)

	Cohorts:	A	B	C	D	E	F	G
Year 7		1999	2000	2001	2002	2003	2004	2005
Year 10		2002	2003	2004	2005	2006	2007	2008
Year 7 (Feb)	no.	143	184.4	209	161	181	177.2	164
Year 10 (Aug)	no.	103	138	155	115	132	116	109
Year 7 (Feb) - 10 (Aug)	%	72.0	74.8	74.2	71.4	72.9	65.5	66.5
State mean^	%	72.5	72.7	72.8	71.7	73.5	71.5	

School against State^

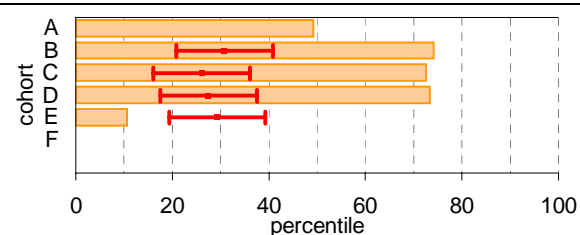
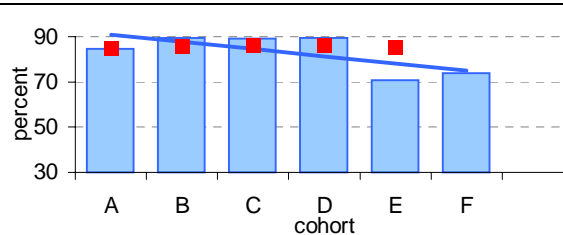


School as percentile against SFO percentile range^



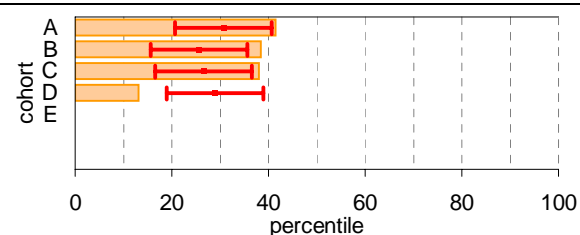
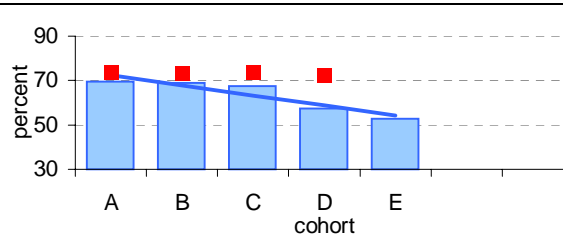
## Year 10 (Aug) - 11 (Feb)

	Cohorts:	A	B	C	D	E	F
Year 10		2002	2003	2004	2005	2006	2007
Year 11		2003	2004	2005	2006	2007	2008
Year 10 (Aug)	no.	144	182	195	161	174.4	153
Year 11 (Feb)	no.	122	163	174	144	123.4	113.1
Year 10 (Aug) - 11 (Feb)	%	84.7	89.6	89.2	89.4	70.8	73.9
State mean^	%	84.9	85.9	85.9	86.1	85.1	



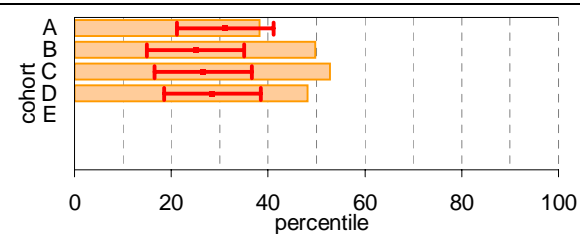
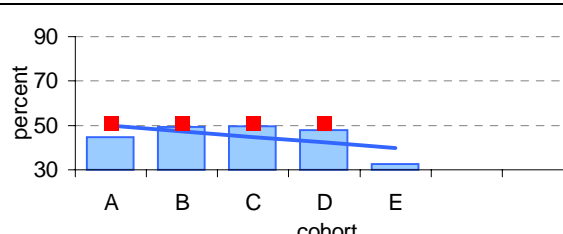
## Year 11 (Feb) - 12 (Aug)

	Cohorts:	A	B	C	D	E
Year 11		2003	2004	2005	2006	2007
Year 12		2004	2005	2006	2007	2008
Year 11 (Feb)	no.	132.1	172.7	192	164	134.5
Year 12 (Aug)	no.	91.9	119	129.6	94.3	70.9
Year 11 (Feb) - 12 (Aug)	%	69.6	68.9	67.5	57.5	52.7
State mean^	%	73.9	73.0	73.5	72.5	



## Year 7 (Feb) - 12 (Aug)

	Cohorts:	A	B	C	D	E
Year 7		1999	2000	2001	2002	2003
Year 12		2004	2005	2006	2007	2008
Year 7 (Feb)	no.	143	184.4	209	161	181
Year 12 (Aug)	no.	63.9	91	103.6	77.3	58.9
Year 7 (Feb) - 12 (Aug)	%	44.7	49.3	49.6	48.0	32.5
State mean^	%	50.6	51.0	51.1	50.8	



Legend: School (blue bar), State Mean (red square), School Trendline\* (blue line), School as percentile (orange bar), SFO Percentile range (red line with arrows)

# Exit Destination: Year 10

School no: 8718

School name: Kurunjang Secondary College

Explanation: The destination of students who left during or at the end of Year 10.

Source of data: Data retrieved electronically from CASES21 following February census.

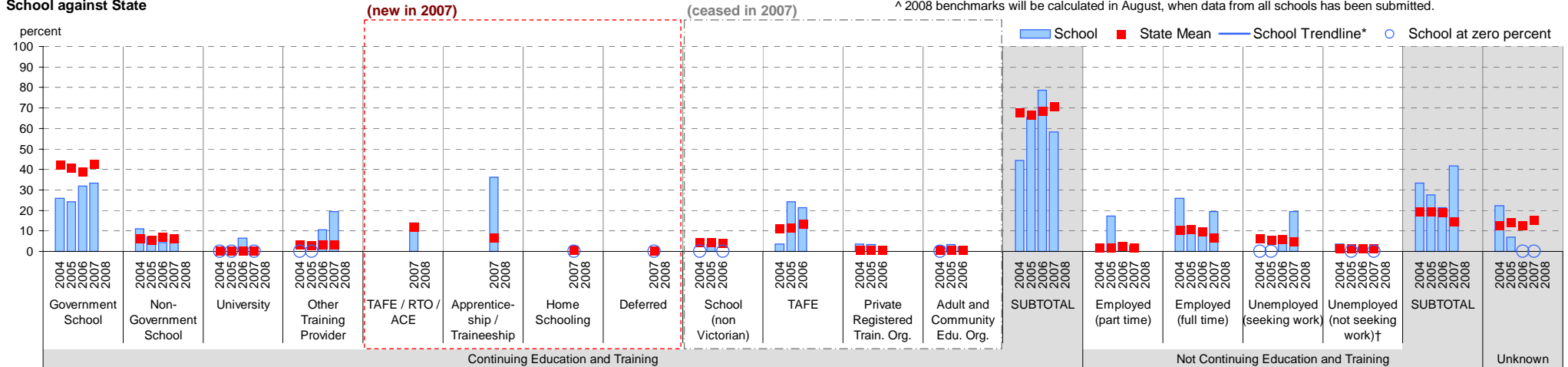
Exit Destination	2004		2005		2006		2007		2008		2007 state^
	n	%	n	%	n	%	n	%	n	%	%
<b>Continuing education and training</b>											
Government School	7	25.9	7	24.1	15	31.9	12	33.3			42.5
Non-Government School	3	11.1	2	6.9	2	4.3	2	5.6			6.0
University					3	6.4					0.1
Other Training Provider					5	10.6	7	19.4			3.3
<b>(new in 2007)</b>											
TAFE / RTO / ACE							5	13.9			11.7
Apprenticeship / Traineeship							13	36.1			6.4
Home Schooling											0.4
Deferred											0.0
<b>(ceased in 2007)</b>											
School (non Victorian)			1	3.4							
TAFE	1	3.7	7	24.1	10	21.3					
Private Registered Training Organisation	1	3.7	1	3.4	1	2.1					
Adult and Community Education Organisation			1	3.4	1	2.1					
<b>SUBTOTAL</b>	<b>12</b>	<b>44.4</b>	<b>19</b>	<b>65.5</b>	<b>37</b>	<b>78.7</b>	<b>21</b>	<b>58.3</b>			<b>70.5</b>
<b>Not continuing education and training</b>											
Employed (part time)	1	3.7	5	17.2	2	4.3	1	2.8			1.7
Employed (full time)	7	25.9	3	10.3	5	10.6	7	19.4			6.5
Unemployed (seeking work)					2	4.3	7	19.4			4.8
Unemployed (not seeking work)†	1	3.7			1	2.1					1.3
<b>SUBTOTAL</b>	<b>9</b>	<b>33.3</b>	<b>8</b>	<b>27.6</b>	<b>10</b>	<b>21.3</b>	<b>15</b>	<b>41.7</b>			<b>14.3</b>
<b>Unknown</b>	<b>6</b>	<b>22.2</b>	<b>2</b>	<b>6.9</b>							<b>15.2</b>
<b>TOTAL</b>	<b>27</b>	<b>100.0</b>	<b>29</b>	<b>100.0</b>	<b>47</b>	<b>100.0</b>	<b>36</b>	<b>100.0</b>			<b>100.0</b>
Total Yr 10 February enrolment	196		169		174		153				

Notes: \* The school trendline is being trialled. It is only plotted when there is data for each calendar year.

† Includes deceased students.

^ 2008 benchmarks will be calculated in August, when data from all schools has been submitted.

## School against State



# Exit Destination: Year 11

School no: 8718

School name: Kurunjang Secondary College

Explanation: The destination of students who left during or at the end of Year 11.

Source of data: Data retrieved electronically from CASES21 following February census.

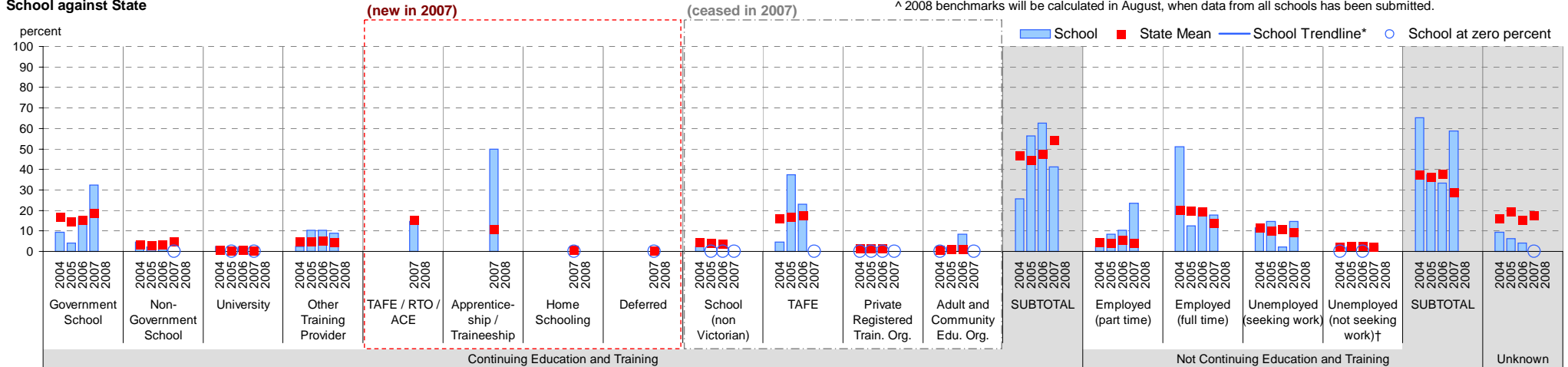
Exit Destination	2004		2005		2006		2007		2008		2007 state <sup>^</sup>
	n	%	n	%	n	%	n	%	n	%	%
<b>Continuing education and training</b>											
Government School	4	9.3	2	4.2	8	16.7	11	32.4			18.6
Non-Government School	2	4.7	1	2.1	1	2.1					4.4
University	1	2.3			1	2.1					0.3
Other Training Provider	1	2.3	5	10.4	5	10.4	3	8.8			4.3
<b>(new in 2007)</b> TAFE / RTO / ACE							5	14.7			15.0
<b>(new in 2007)</b> Apprenticeship / Traineeship							17	50.0			10.7
<b>(new in 2007)</b> Home Schooling											0.4
<b>(new in 2007)</b> Deferred											0.0
<b>(ceased in 2007)</b> School (non Victorian)	1	2.3									
<b>(ceased in 2007)</b> TAFE	2	4.7	18	37.5	11	22.9					
<b>(ceased in 2007)</b> Private Registered Training Organisation					4	8.3					
<b>(ceased in 2007)</b> Adult and Community Education Organisation			1	2.1							
<b>SUBTOTAL</b>	<b>11</b>	<b>25.6</b>	<b>27</b>	<b>56.3</b>	<b>30</b>	<b>62.5</b>	<b>14</b>	<b>41.2</b>			<b>53.9</b>
<b>Not continuing education and training</b>											
Employed (part time)	1	2.3	4	8.3	5	10.4	8	23.5			4.1
Employed (full time)	22	51.2	6	12.5	10	20.8	6	17.6			13.7
Unemployed (seeking work)	5	11.6	7	14.6	1	2.1	5	14.7			9.1
Unemployed (not seeking work)†			1	2.1			1	2.9			1.8
<b>SUBTOTAL</b>	<b>28</b>	<b>65.1</b>	<b>18</b>	<b>37.5</b>	<b>16</b>	<b>33.3</b>	<b>20</b>	<b>58.8</b>			<b>28.7</b>
<b>Unknown</b>	<b>4</b>	<b>9.3</b>	<b>3</b>	<b>6.3</b>	<b>2</b>	<b>4.2</b>					<b>17.4</b>
<b>TOTAL</b>	<b>43</b>	<b>100.0</b>	<b>48</b>	<b>100.0</b>	<b>48</b>	<b>100.0</b>	<b>34</b>	<b>100.0</b>			<b>100.0</b>
Total Yr 11 February enrolment	173		192		164		135				

Notes: \* The school trendline is being trialled. It is only plotted when there is data for each calendar year.

† Includes deceased students.

^ 2008 benchmarks will be calculated in August, when data from all schools has been submitted.

## School against State



# Exit Destination: Students who left Year 12 before completing the year

School no: 8718

School name: Kurunjang Secondary College

Explanation: The destination of students who left prior to completing Year 12.

Source of data: Data retrieved electronically from CASES21 following February census.

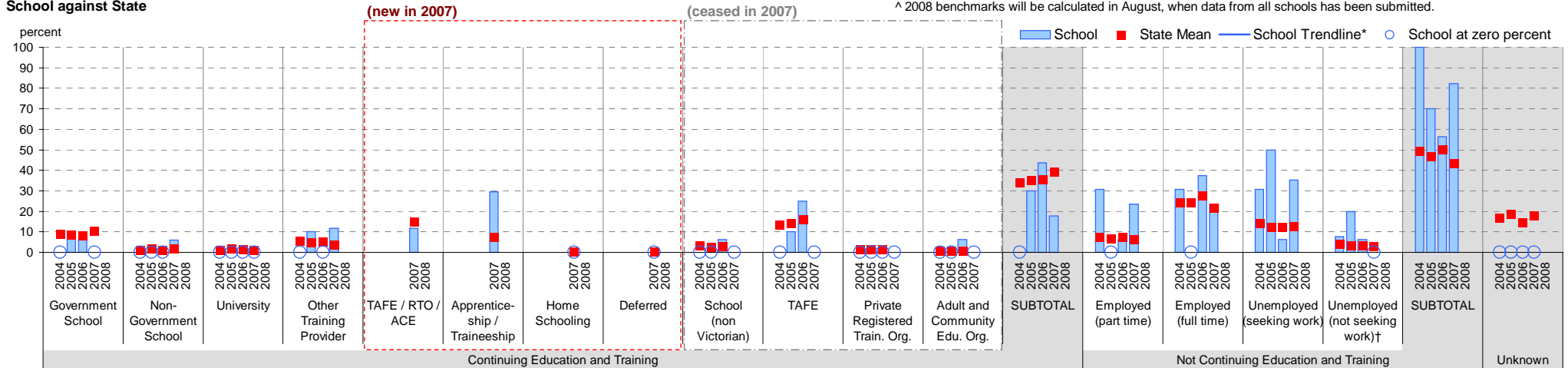
Exit Destination	2004		2005		2006		2007		2008		2007 state <sup>^</sup>
	n	%	n	%	n	%	n	%	n	%	%
<b>Continuing education and training</b>											
Government School			1	10.0	1	6.3					10.2
Non-Government School							1	5.9			1.8
University											1.1
Other Training Provider			1	10.0			2	11.8			3.5
<b>(new in 2007)</b>											
TAFE / RTO / ACE							2	11.8			14.7
Apprenticeship / Traineeship							5	29.4			7.5
Home Schooling											
Deferred											0.1
<b>(ceased in 2007)</b>											
School (non Victorian)					1	6.3					
TAFE			1	10.0	4	25.0					
Private Registered Training Organisation											
Adult and Community Education Organisation					1	6.3					
<b>SUBTOTAL</b>			<b>3</b>	<b>30.0</b>	<b>7</b>	<b>43.8</b>	<b>3</b>	<b>17.6</b>			<b>39.0</b>
<b>Not continuing education and training</b>											
Employed (part time)	4	30.8			1	6.3	4	23.5			6.0
Employed (full time)	4	30.8			6	37.5	4	23.5			21.6
Unemployed (seeking work)	4	30.8	5	50.0	1	6.3	6	35.3			12.8
Unemployed (not seeking work)†	1	7.7	2	20.0	1	6.3					2.9
<b>SUBTOTAL</b>	<b>13</b>	<b>100.0</b>	<b>7</b>	<b>70.0</b>	<b>9</b>	<b>56.3</b>	<b>14</b>	<b>82.4</b>			<b>43.2</b>
<b>Unknown</b>											17.8
<b>TOTAL</b>	<b>13</b>	<b>100.0</b>	<b>10</b>	<b>100.0</b>	<b>16</b>	<b>100.0</b>	<b>17</b>	<b>100.0</b>			<b>100.0</b>
Total Yr 11 February enrolment	112		136		148		120				

Notes: \* The school trendline is being trialled. It is only plotted when there is data for each calendar year.

† Includes deceased students.

^ 2008 benchmarks will be calculated in August, when data from all schools has been submitted.

## School against State



# Exit Destination: Students who left at the end of Year 12

School no: 8718

School name: Kurunjang Secondary College

Explanation: The destination of students who left at the end of Year 12.

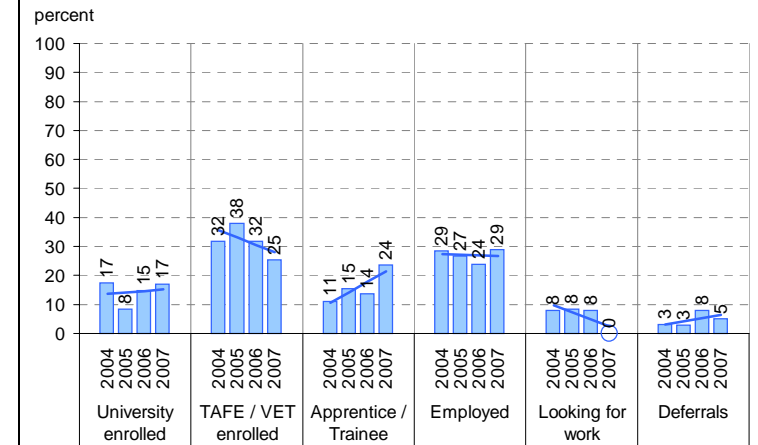
Source of data: Data retrieved electronically from CASES21 following February census.

Exit Destination	2004		2005		2006		2007		2008		2007 state^
	n	%	n	%	n	%	n	%	n	%	
<b>Continuing education and training</b>											
Government School	3	2.7			1	0.7	1	1.7			1.2
Non-Government School											0.3
University	16	14.3	11	9.0	22	16.1	18	31.0			36.6
Other Training Provider	1	0.9	1	0.8	2	1.5	1	1.7			2.7
<b>(new in 2007)</b>											
TAFE / RTO / ACE							29	50.0			22.7
Apprenticeship / Traineeship							14	24.1			5.6
Home Schooling											0.0
Deferred											4.1
<b>(ceased in 2007)</b>											
School (non Victorian)	1	0.9									
TAFE	33	29.5	63	51.6	58	42.3					
Private Registered Training Organisation	3	2.7	3	2.5	2	1.5					
Adult and Community Education Organisation					1	0.7					
<b>SUBTOTAL</b>	<b>57</b>	<b>50.9</b>	<b>78</b>	<b>63.9</b>	<b>86</b>	<b>62.8</b>	<b>20</b>	<b>34.5</b>			<b>73.2</b>
<b>Not continuing education and training</b>											
Employed (part time)	18	16.1	12	9.8	13	9.5	13	22.4			5.5
Employed (full time)	31	27.7	22	18.0	22	16.1	18	31.0			10.5
Unemployed (seeking work)	5	4.5	7	5.7	14	10.2	7	12.1			4.4
Unemployed (not seeking work)†	1	0.9	2	1.6	1	0.7					0.7
<b>SUBTOTAL</b>	<b>55</b>	<b>49.1</b>	<b>43</b>	<b>35.2</b>	<b>50</b>	<b>36.5</b>	<b>38</b>	<b>65.5</b>			<b>21.1</b>
<b>Unknown</b>			<b>1</b>	<b>0.8</b>	<b>1</b>	<b>0.7</b>					<b>5.7</b>
<b>TOTAL</b>	<b>112</b>	<b>100.0</b>	<b>122</b>	<b>100.0</b>	<b>137</b>	<b>100.0</b>	<b>58</b>	<b>100.0</b>			<b>100.0</b>
Total Yr 12 February enrolment	112		136		148		120				

# On Track

Source of data: Data received from a telephone survey of Year 12 completers, conducted in April / May of the subsequent year.

School only



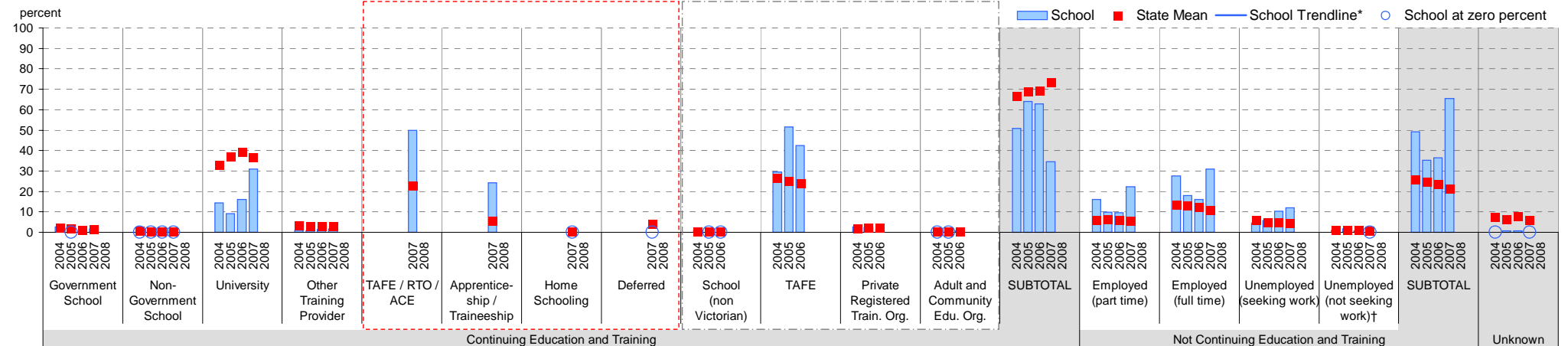
Note: The exit destination data from On Track and CASES21 is not directly comparable for several reasons, one of which is the different bases. CASES21 data is based on all Year 12 completers, whereas On Track is based on Year 12 completers who responded to the survey. Hence the CASES21 data has an "unknown" category and the On Track data does not. Another reason is the slightly different categories for example, CASES21 includes a "home schooling" category.

Notes: \* The school trendline is being trialled. It is only plotted when there is data for each calendar year.

† Includes deceased students.

^ 2008 benchmarks will be calculated in August, when data from all schools has been submitted.

# School against State



# Student Absence

School no: 8718

School name: Kurunjang Secondary College

Source of data: Data retrieved electronically from CASES21.

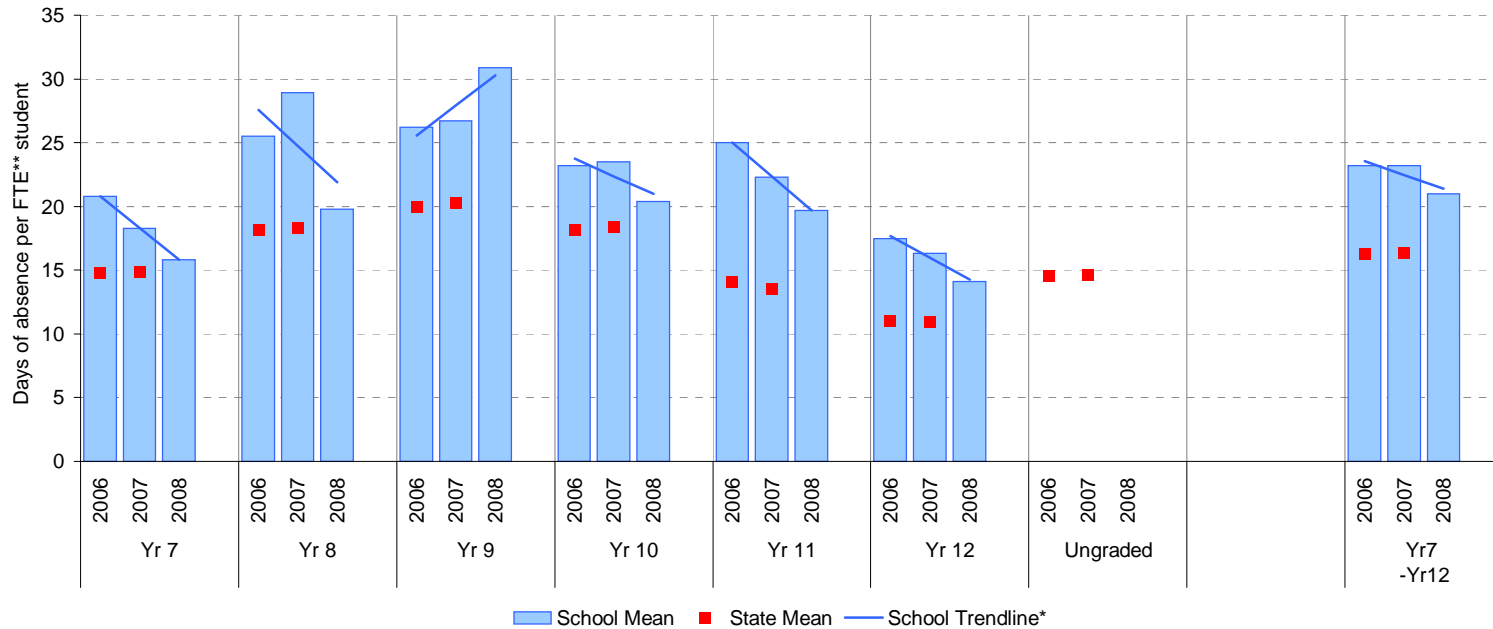
Explanation: The average (mean) number of absent days† per FTE\*\* student.

Note that 20 absent days equates to 1 absent day per fortnight, and 10 absent days to 1 absent day per month.

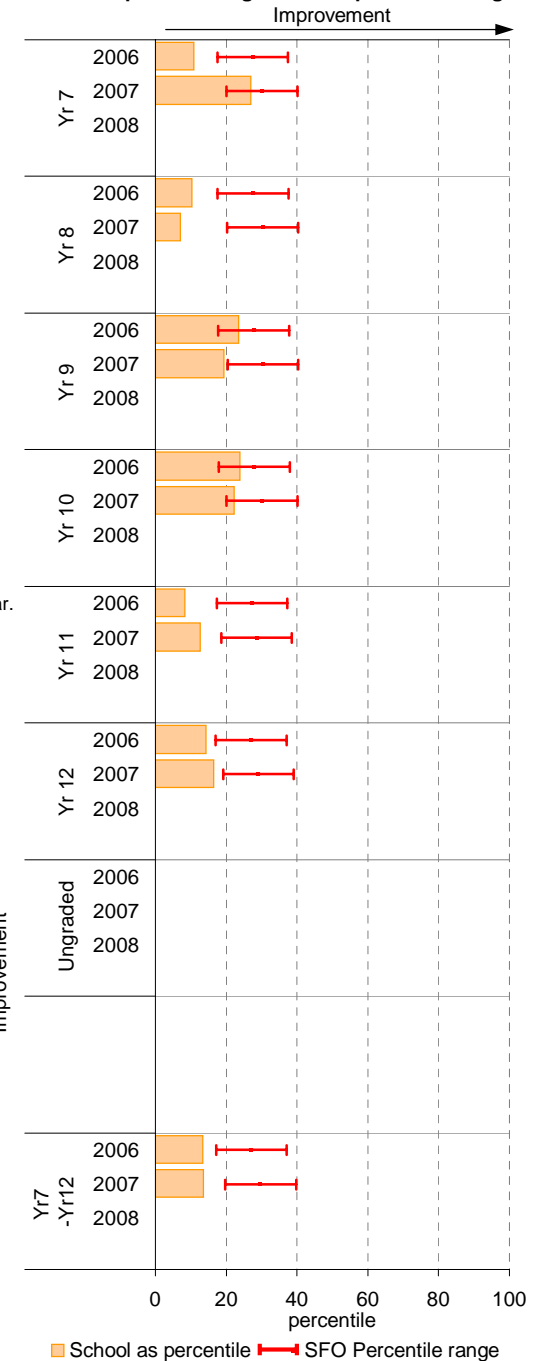
	School						2007 state benchmark^		
	2006		2007		2008		25th ptile	Mean	75th ptile
	Enrolments	Avg absent days / FTE** student	Enrolments	Avg absent days / FTE** student	Enrolments	Avg absent days / FTE** student			
Yr 7	158.9	20.8	141.0	18.3	124.1	15.8	12.6	14.9	18.6
Yr 8	170.3	25.5	160.7	28.9	155.3	19.8	15.1	18.3	22.2
Yr 9	163.0	26.2	173.8	26.7	163.1	30.9	15.9	20.2	24.8
Yr 10	168.6	23.2	148.1	23.5	156.8	20.4	15.2	18.4	22.8
Yr 11	150.0	25	124.0	22.3	115.6	19.7	10.9	13.5	18.5
Yr 12	140.6	17.5	107.0	16.3	81.0	14.1	8.3	10.9	14.8
Ungraded								14.6	
7-12 mean		23.2		23.2		21		16.3	

Notes: † Includes non-curriculum absences only (absence codes 200, 201, 202, 203, 205, 206, 207, 208, 209, 210, 211, 300, 401, 500, 700, 800, 804, 805, 900).  
 \* The school trendline is only plotted when there is data for each calendar year.  
 \*\* FTE = Full Time Equivalent (including part-time and part-year fractions).  
 ^ 2008 benchmarks and percentiles will be calculated in August, when data from all schools has been submitted.

## School Mean against State Mean^



## School Mean as percentile against SFO percentile range^



# Parent Opinion

School no: 8718

School name: Kurunjang Secondary College

**Explanation:** A self-completion questionnaire to obtain parents' opinions of the school. Parents rated a number of statements using a scale where 1=strongly disagree & 7=strongly agree. The statements were grouped into the following categories.

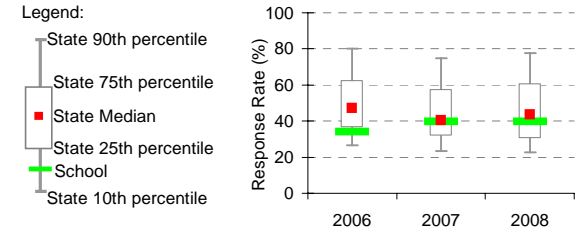
**Source of data:** Data scanned from questionnaires completed by parents.

Variable No. Name	Year	School mean	State Secondary median
1 School Improvement	2006	4.62	5.13
	2007	4.84	5.11
	2008	4.49	5.07
2 Approachability	2006	4.53	5.11
	2007	4.83	5.10
	2008	4.66	5.12
3 Teacher Morale	2006	4.20	4.92
	2007	4.49	4.88
	2008	4.46	4.89
4 Parent Input	2006	4.31	4.89
	2007	4.55	4.83
	2008	4.49	4.84
5 Stimulating Learning	2006	4.27	4.81
	2007	4.44	4.79
	2008	4.52	4.82
6 Behaviour Management	2006	3.86	4.76
	2007	4.27	4.76
	2008	3.56	4.71
7 Reporting	2006	4.97	5.28
	2007	4.93	5.11
	2008	4.69	5.17

Variable No. Name	Year	School mean	State Secondary median
8 Learning Focus	2006	5.03	5.27
	2007	4.88	5.24
	2008	4.96	5.22
9 Transitions	2006	4.76	5.24
	2007	4.96	5.23
	2008	4.94	5.24
10 Extra Curricula	2006	4.57	4.67
	2007	4.20	4.67
	2008	3.86	4.65
11 Homework	2006	4.20	4.57
	2007	4.12	4.51
	2008	4.28	4.57
12 General Satisfaction	2006	4.96	5.33
	2007	4.80	5.31
	2008	4.71	5.32
13 Student Safety^	2006	5.14	5.37
	2007	5.17	5.42
	2008	5.03	5.44
14 Classroom Behaviour^	2006	3.31	3.56
	2007	3.14	3.47
	2008	2.58	3.48

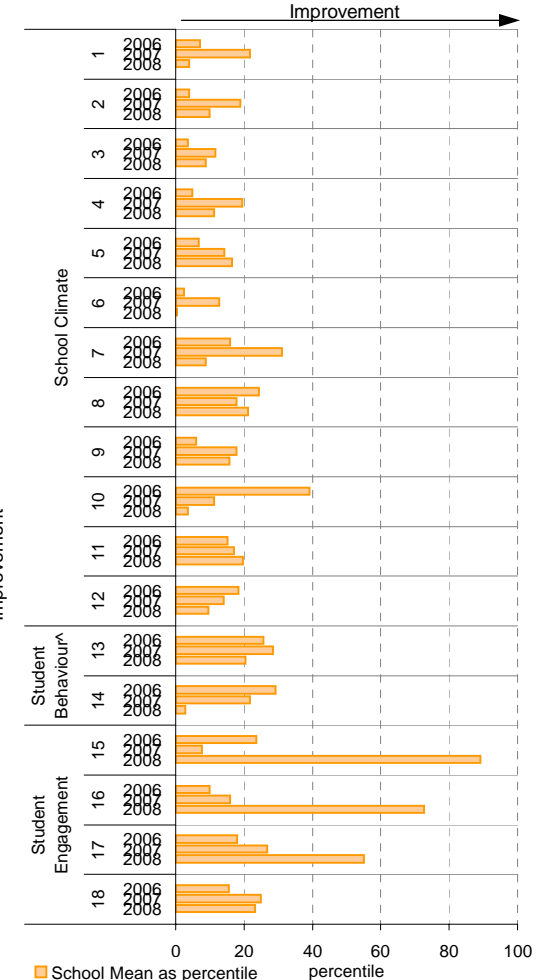
Variable No. Name	Year	School mean	State Secondary median
15 Connectedness to Peers	2006	5.54	5.71
	2007	5.35	5.68
	2008	5.95	5.67
16 Student Motivation	2006	4.37	4.87
	2007	4.42	4.81
	2008	5.02	4.78
17 Social Skills	2006	5.20	5.42
	2007	5.23	5.41
	2008	5.44	5.40
18 School Connectedness	2006	4.69	4.99
	2007	4.71	4.95
	2008	4.71	4.94

## School response rate\*\* against Secondary school distribution

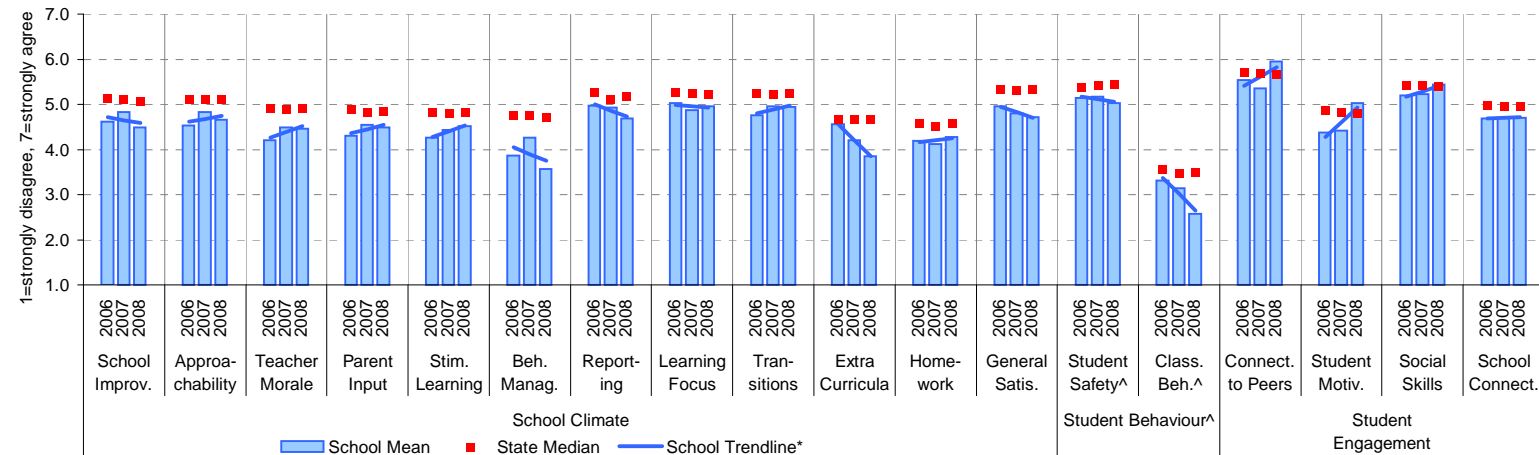


Year	No. of respondents	No. invited	Response Rate
2006	54	159	34%
2007	55	138	39.9%
2008	55	138	39.9%

## School Mean as percentile (by school type)



## School Mean against Secondary State Mean



Notes: \* The school trendline is plotted when there is data for each calendar year.

^ Benchmarks available for Primary, Secondary, Pri/Sec, Special and SDS schools.

\*\* If there were 6 or less respondents, table data is not shown for confidentiality reasons. If there were 3 or less respondents, graph data is not shown for confidentiality reasons.

^ Parents' responses to all negatively phrased questions have been reversed for reporting purposes. Across all variables, the higher the score or percentile rank, the more positive parents' perceptions.

# Staff Opinion

School no: 8718

School name: Kurunjang Secondary College

Explanation: A self-completion questionnaire to obtain the staff's opinions of the school. The survey was administered online using the School Organisational Health Questionnaire.

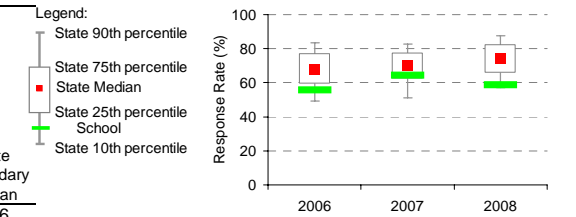
Source of data: Data transmitted from school staff to DEECD via an online survey application.

Variable	No.	Name	Year	School mean	State Secondary median
1 Individual Morale			2006	51.2	64.2
			2007	52.0	63.5
			2008	49.4	65.0
2 School Morale			2006	43.5	60.8
			2007	44.5	60.2
			2008	38.9	62.2
3 Supportive Leadership			2006	42.9	65.0
			2007	51.9	63.8
			2008	41.0	65.8
4 Role Clarity			2006	62.5	68.0
			2007	63.2	67.8
			2008	62.4	69.1
5 Professional Interaction			2006	63.6	68.1
			2007	61.3	68.3
			2008	61.3	70.4
6 Participative Decision-Making			2006	51.9	59.0
			2007	53.0	58.7
			2008	38.3	59.8
7 Goal Congruence			2006	52.7	64.7
			2007	56.3	65.3
			2008	51.9	66.4

Variable	No.	Name	Year	School mean	State Secondary median
8 Appraisal & Recognition			2006	43.4	55.6
			2007	46.4	55.4
			2008	44.0	57.9
9 Professional Growth			2006	55.9	61.2
			2007	48.8	61.6
			2008	47.8	62.7
10 Curriculum Coordination			2006	61.5	57.8
			2007	57.1	57.5
			2008	51.4	58.4
11 Effective Discipline Policy			2006	44.0	58.5
			2007	46.7	59.2
			2008	43.4	59.5
12 Student Orientation			2006	60.2	70.5
			2007	57.9	70.0
			2008	55.5	70.8
13 Student Motivation			2006	28.5	48.9
			2007	26.9	48.1
			2008	30.7	49.0
14 Student Decision-Making			2006	47.9	57.2
			2007	49.4	56.2
			2008	49.1	57.8

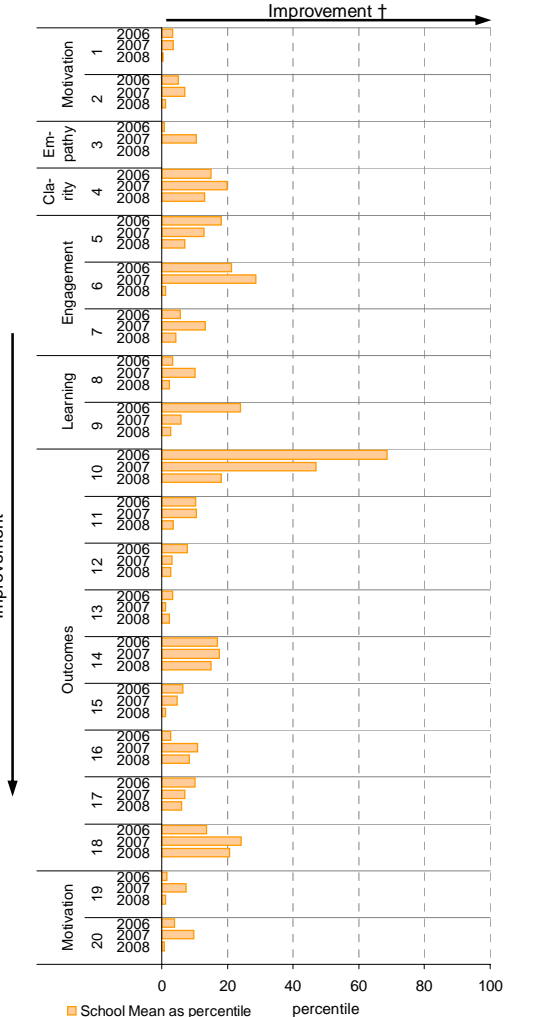
Variable	No.	Name	Year	School mean	State Secondary median
15 Learning Environment			2006	49.7	62.6
			2007	49.1	62.3
			2008	44.4	63.8
16 Student Misbehaviour			2006	76.0	49.3
			2007	69.8	49.9
			2008	70.7	49.6
17 Classroom Misbehaviour			2006	32.1	20.9
			2007	34.5	22.4
			2008	34.6	21.4
18 Excessive Work Demands			2006	69.5	60.4
			2007	67.1	61.4
			2008	66.5	59.4
19 Individual Distress			2006	46.8	32.6
			2007	42.8	33.2
			2008	46.5	31.7
20 School Distress			2006	65.5	47.1
			2007	62.9	48.6
			2008	67.9	46.2

## School response rate\*\* against Secondary school distribution

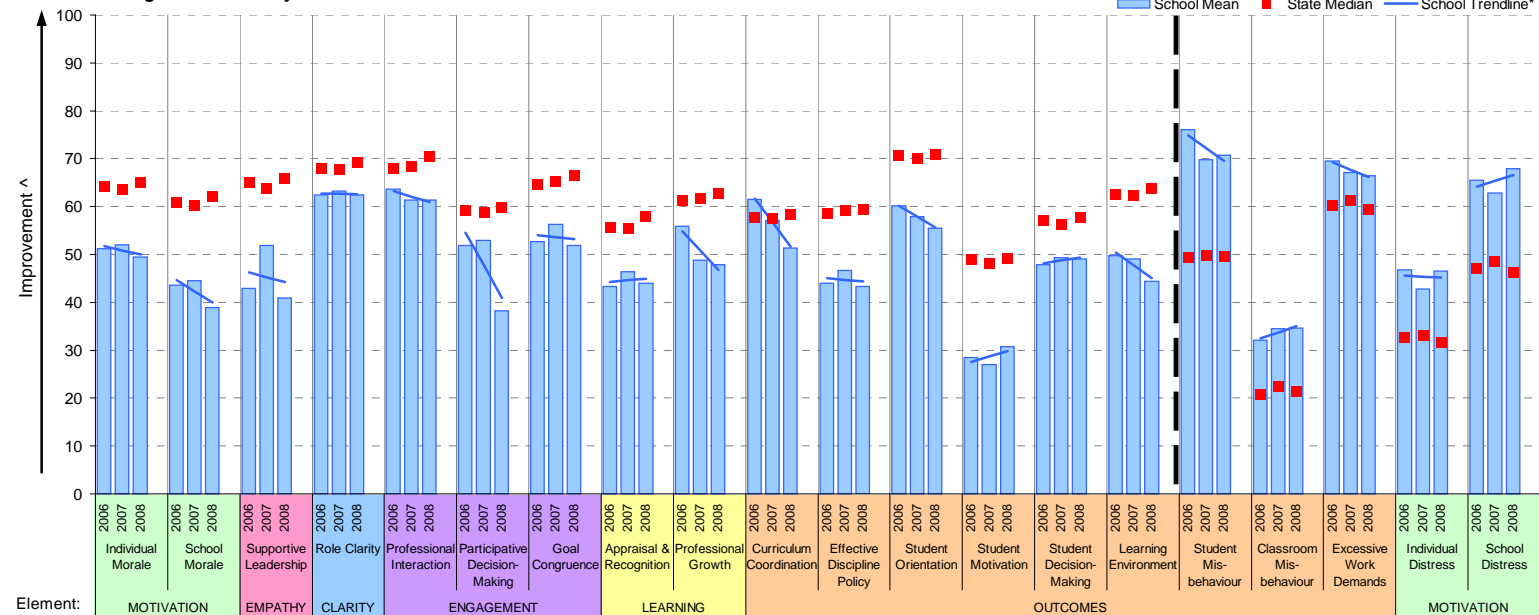


	No. of respondents	No. invited	Response Rate
2006	64	115	56%
2007	70	109	64%
2008	58	99	59%

## School Mean as percentile (by school type)



## School Mean against Secondary State Median



Notes: \* The school trendline is being trialled. It is only plotted when there is data for each calendar year.

\*\* If there were 6 or less respondents, table data is not shown for confidentiality reasons. If there were 3 or less respondents, graph data is not shown for confidentiality reasons.

^ The higher the school mean, the more positive the outcome for variables 1 to 15. The lower the school mean, the more positive the outcome for variables 16 to 20.

† The higher the school percentile, the more positive the outcome for all variables.

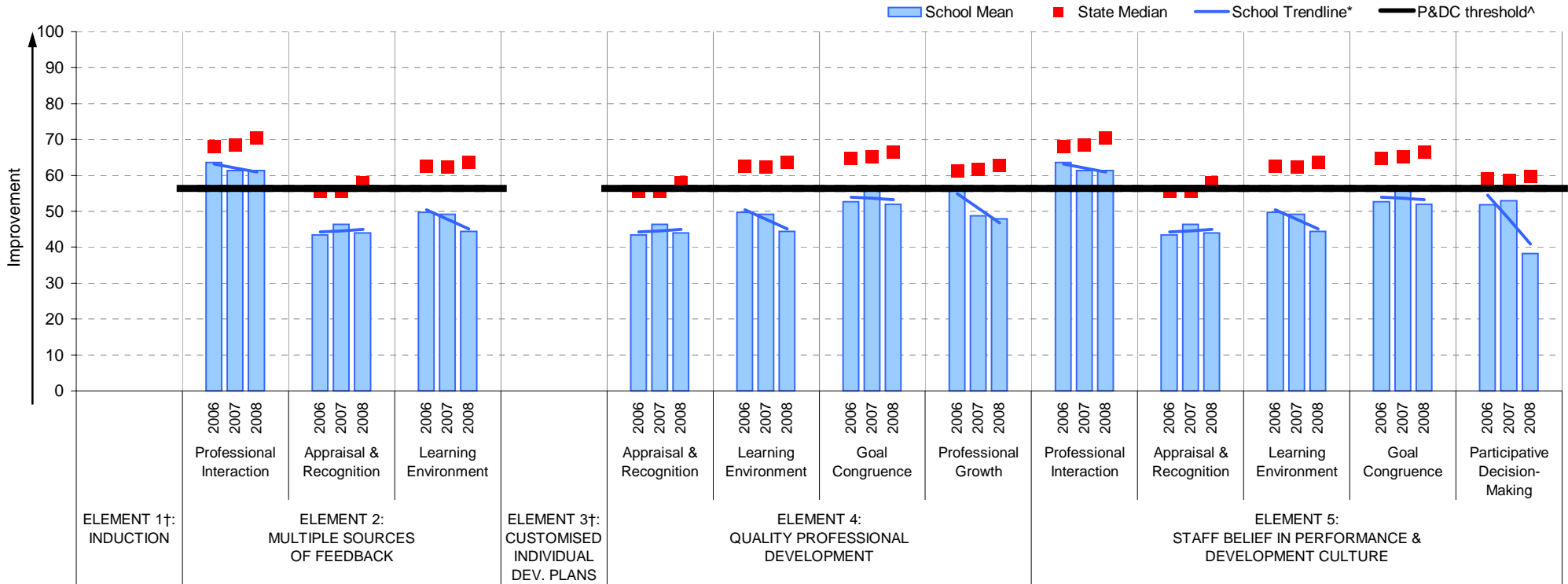
^^ Benchmarks are available for Primary, Secondary, Pri/Sec, Special & SDS schools.

# Performance & Development Culture (P&DC)<sup>††</sup>

NEW

**School no:** 8718  
**School name:** Kurunjang Secondary College  
**Explanation:** The data on this page refers to the Staff Opinion Survey.  
**Source of data:** Data transmitted from school staff to DEECD via an online survey application.

## School Mean against Secondary State Median



- Notes:
- †† An assessment of the correlation between the P&DC Questionnaire and the Staff Opinion Survey was undertaken using data from Victorian Government schools that completed both surveys from 2005 to 2007 (ie. 699 schools). This led to the identification of the components of the Staff Opinion Survey that could be used to assist schools with the ongoing monitoring of their performance and development culture. Refer to the P&DC website for further information: <http://www.education.vic.gov.au/management/schoolimprovement/panddc/default.htm>. For numerical results relating to the above graph, refer to the Staff Opinion Survey page in this report.
  - † Note that there is no significant correlation between the Staff Opinion Survey and P&DC elements 1 (Induction) and 3 (Customised Individual Development Plans).
  - ^ The P&DC threshold was derived from the P&DC Questionnaire 'percent favourable' methodology where a school is considered at the standard of accreditation when their Element score is >75% favourable (ie. at least 75% of staff selected the top two response categories in the P&DC Questionnaire).
  - \* The school trendline is only plotted when there is data for each calendar year.
  - \*\* If there were 3 or less respondents, graph data is not shown for confidentiality reasons.
  - ^^ Benchmarks are available for Primary, Secondary, Pri/Sec, Special & SDS schools.

# Staff Sick Leave

**School no:** 8718

**School name:** Kurunjang Secondary College

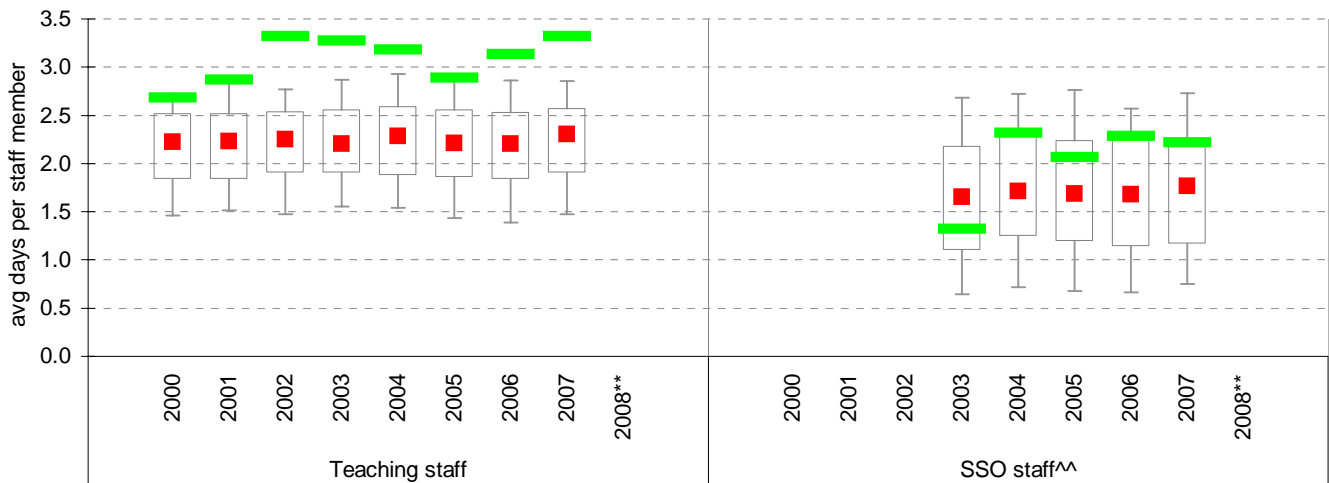
**Explanation:** The number of non-certificated and total sick leave days taken per staff member. A detailed explanation on how staff sick leave is calculated is provided in the Annual Reports Frequently Asked Questions page of the Standards website (<http://www.sofweb.vic.edu.au/standards/account/arepq.htm>).

**Source of data:** Human Resources Management System (HRMS)^.

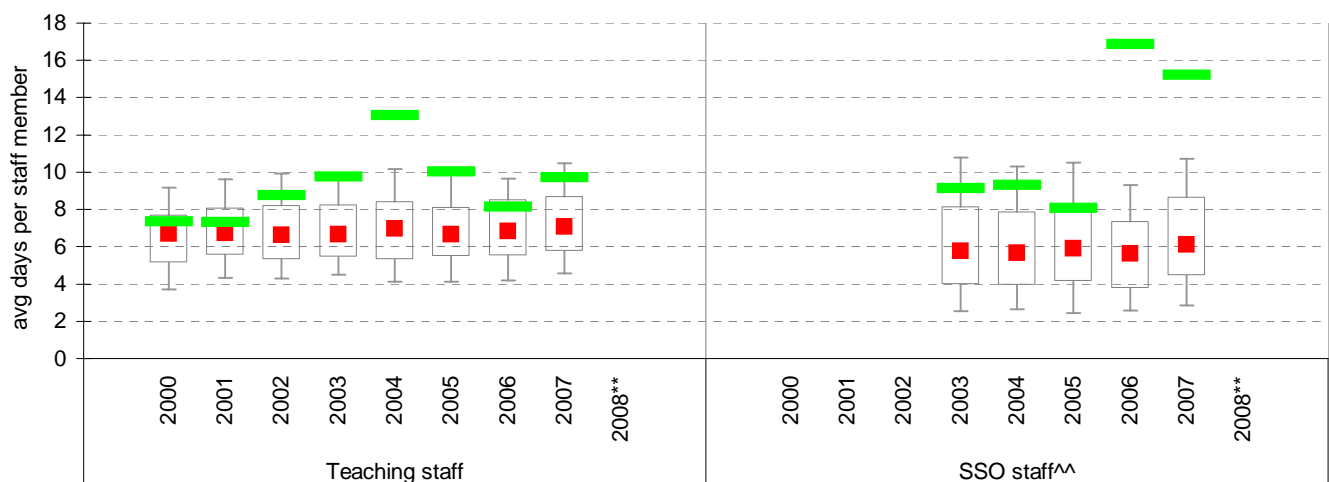
Staff Type	Non-Certificated sick leave days per staff member^									2007 State Median**
	2000	2001	2002	2003	2004	2005	2006	2007	2008**	
Teacher	2.68	2.87	3.32	3.28	3.18	2.89	3.13	3.32		2.31
SSO^^					2.32	2.07	2.28	2.22		1.77

Staff Type	Total sick leave days per staff member^									2007 State Median**
	2000	2001	2002	2003	2004	2005	2006	2007	2008**	
Teacher	7.34	7.31	8.74	9.77	13.06	10.03	8.13	9.73		7.06
SSO^^					9.31	8.08	16.86	15.21		6.10

## NON-CERTIFICATED sick leave



## TOTAL sick leave

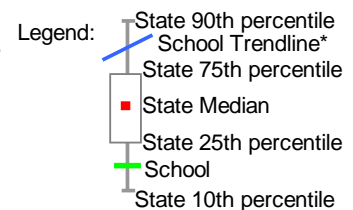


Note: \* The school trendline is only plotted when there is data for each calendar year.

\*\* Data for 2008 will be available in April / May of 2009.

^ There may be some discrepancy between the results from CASES & those from HRMS. The latter are considered to be more accurate.

^^ Data for SSO (School Services Officer) staff is only available from 2003.



## Teaching Staff Retention

**School no:** 8718

**School name:** Kurunjang Secondary College

**Explanation:** The retention rate of teaching staff is determined by matching staff payroll records for the last pay in June of one year (Year A), to the last pay in June of the following year (Year B).

**Source of data:** Human Resources Management System (HRMS).

### Teaching Staff\*

Year A	Year B	Number of Teaching Staff in Year A	Number of Teaching Staff retained in Year B	Teaching Staff Retention Rate	Statewide Average
2005	2006	92	76	83%	87%
2006	2007	90	74	82%	86%
2007	2008	86	65	76%	84%

Of the 92 teaching service staff at June 2005 (including those on leave without pay), 76 or 83% were still at the school at June 2006. This figure across all Government schools was 87%.

Of the 90 teaching service staff at June 2006 (including those on leave without pay), 74 or 82% were still at the school at June 2007. This figure across all Government schools was 86%.

Of the 86 teaching service staff at June 2007 (including those on leave without pay), 65 or 76% were still at the school at June 2008. This figure across all Government schools was 84%.

### Ongoing Teaching Staff\*^

Year A	Year B	Number of Ongoing Teaching Staff in Year A	Number of Ongoing Teaching Staff retained in Year B	Ongoing Teaching Staff Retention Rate	Statewide Average
2005	2006	80	69	86%	91%
2006	2007	79	68	86%	90%
2007	2008	76	60	79%	88%

Of the 80 ongoing teaching service staff at June 2005 (including those on leave without pay), 69 or 86% were still at the school at June 2006. This figure across all Government schools was 91%.

Of the 79 ongoing teaching service staff at June 2006 (including those on leave without pay), 68 or 86% were still at the school at June 2007. This figure across all Government schools was 90%.

Of the 76 ongoing teaching service staff at June 2007 (including those on leave without pay), 60 or 79% were still at the school at June 2008. This figure across all Government schools was 88%.

Notes: \* Teaching staff includes Principal class, Teacher class and Instructor class. Teaching staff employed as visiting teachers, guidance officers, curriculum consultants, etc. are excluded as they are not charged to a particular school.

^ Not including fixed term staff, except for where staff had changed from ongoing in Year A to fixed term in Year B.

# Bank Balances

**School no:** 8718

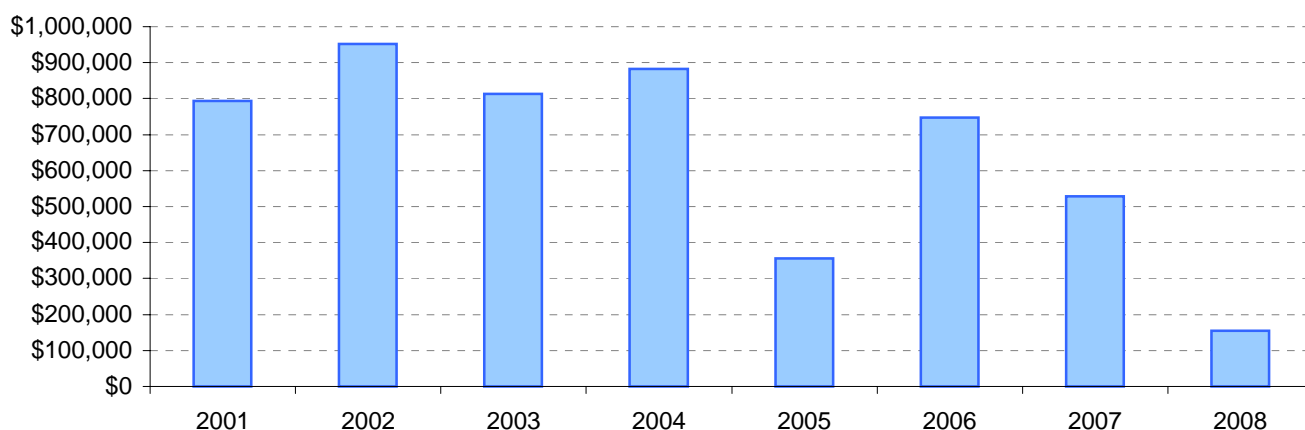
**School name:** Kurunjang Secondary College

**Explanation:** Account balance figures include official and investment accounts, and are calculated by taking the opening balance at 1st January plus the total receipts at 31st December less total payments at 31st December.

## Account Balances (Official plus Investment Accounts)

2001	\$794,298	2005	\$356,020
2002	\$952,128	2006	\$746,695
2003	\$813,617	2007	\$528,453
2004	\$881,964	2008	\$154,674

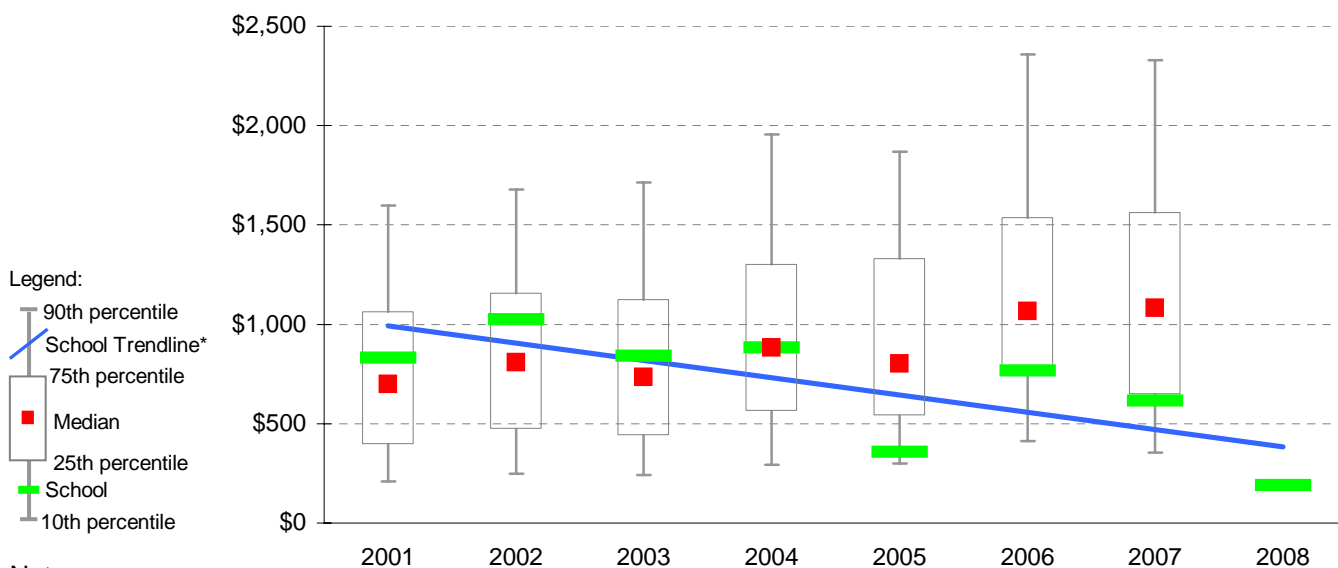
### Account Balances



## Account Balances (Official plus Investment Accounts) per student<sup>†</sup>

2001	\$833	2005	\$356
2002	\$1,026	2006	\$766
2003	\$840	2007	\$615
2004	\$883	2008	\$191

### School account balances per student enrolled in August census plotted on state Secondary benchmarks<sup>^</sup>



#### Notes:

\* The school trendline is being trialled. It is only plotted when there is data for each calendar year.

† The account balance per student has been calculated to enable some comparison to be made between schools.

^ Benchmarks for primary, secondary, pri/sec, SDS, special and language schools.